



# Upper Axe Landscape Recovery Project



[www.upperaxe.org](http://www.upperaxe.org)

<https://defraframing.blog.gov.uk/2024/01/29/restoring-the-river-axe-a-landscape-recovery-spotlight/>



## Collaboration

Nature doesn't conform to man-made borders, so it's important that if we want to bring about significant change, we work together.

In 2022, we formed the Upper Axe Landscape Partnership Community Interest Company (CIC) to pave the journey ahead for the project, while also establishing strong partnerships between all the stakeholders involved, including:

- farmers
- the Magdalen Environmental Trust
- ecologists
- farm plan specialists
- vets
- geomorphologists
- the Environment Agency
- Defra



## Our vision for the future

In the Axe catchment and across the south-west, the soil has a high clay content. Soil with a high clay content is much more easily compacted and, as a result, can't hold as much rainwater as other soil types. This leads to more surface-water runoff and more flooding.

Our project seeks to modify farm practices across the project area to improve soil structure to reduce runoff and improving the overall quality of the soil. We are looking to introduce minimum till techniques, exploring options to undersow arable crops and plant herbal leys to replace maize.

Biologically active soil is the foundation for a sustainable and economic farm. Active management of the soil will improve both its quality and its ability to sequester carbon.

There is a will from the farmers to improve the soil quality as the outcomes are cross cutting, with mutual benefits for people, plants, animals and the planet.

# Restoring the River Axe: a Landscape Recovery spotlight

[Alasdair Moffett](#), 29 January 2024 - [Payments to restore landscapes and ecosystems](#)



All photos credit: [Randal Photos](#)

Flowing through Dorset, Somerset and Devon, the 35 kilometre-long River Axe is an ecologically diverse river. Its name derives from the Celtic, meaning 'abounding in fish'.

The river is a lifeline to the people, animals and plants in the area and is a river environment modified by centuries of human activity. That said, it still retains many of its natural geomorphological and important ecological features.

**BBC**

**FARMING TODAY**

Listen now **4**

1/23 - National Parks and National Landscape Recovery along the River Axe - replacing Glaxo



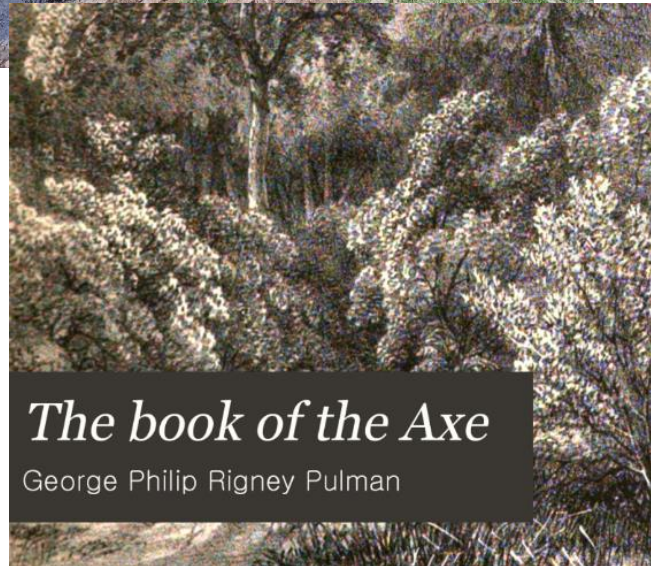


- Project with 3 Priorities
- Farming
- Rivers
- People





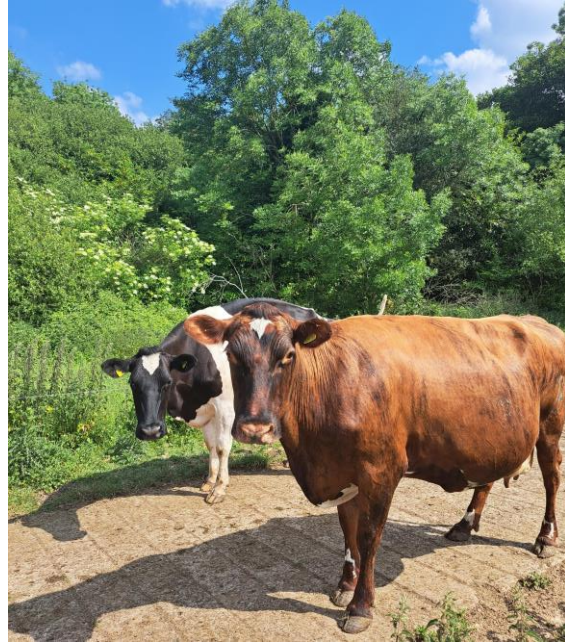
• River

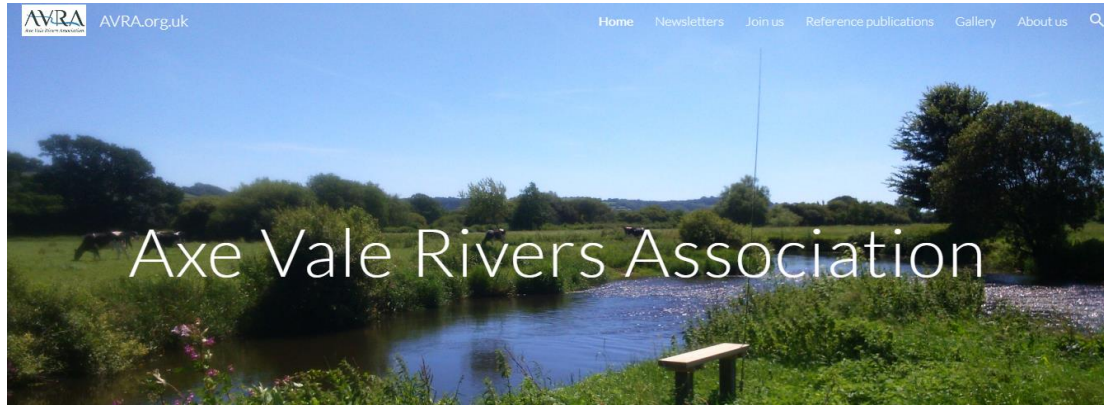


*The book of the Axe*

George Philip Rigney Pulman







Education on farm fresh produce & agricultural practice.

Find us on facebook:  
📌 [facebook.com/driftmeats](https://facebook.com/driftmeats)

Or contact Emma on:  
📞 07432613431



Welcome to Magdalen Farm

- School Trips & Learning
- Charities & Organisations
- You & Your Family