



Dorset
Wildlife Trust

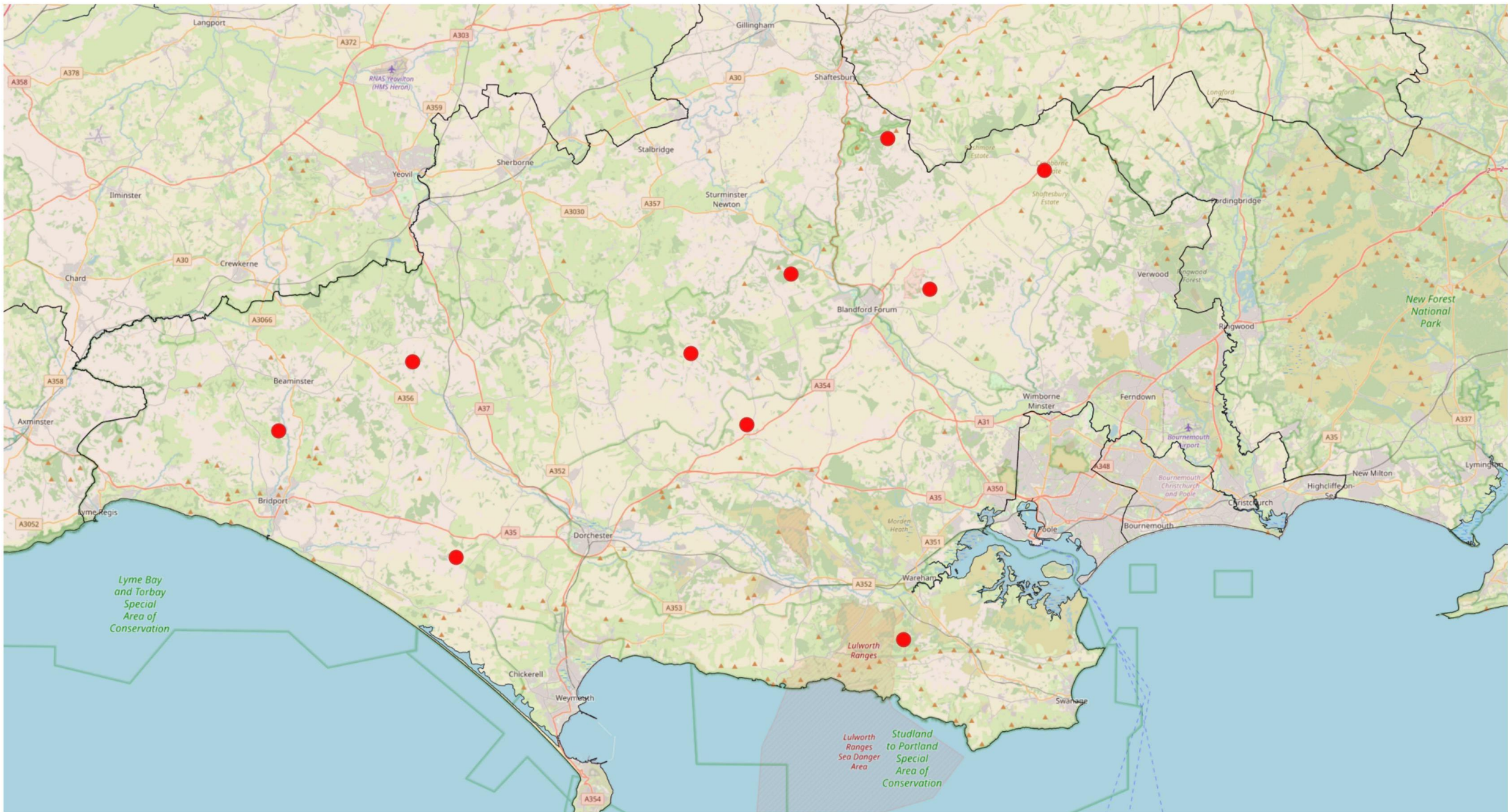
Farm Clusters: setting the baseline for Nature Recovery

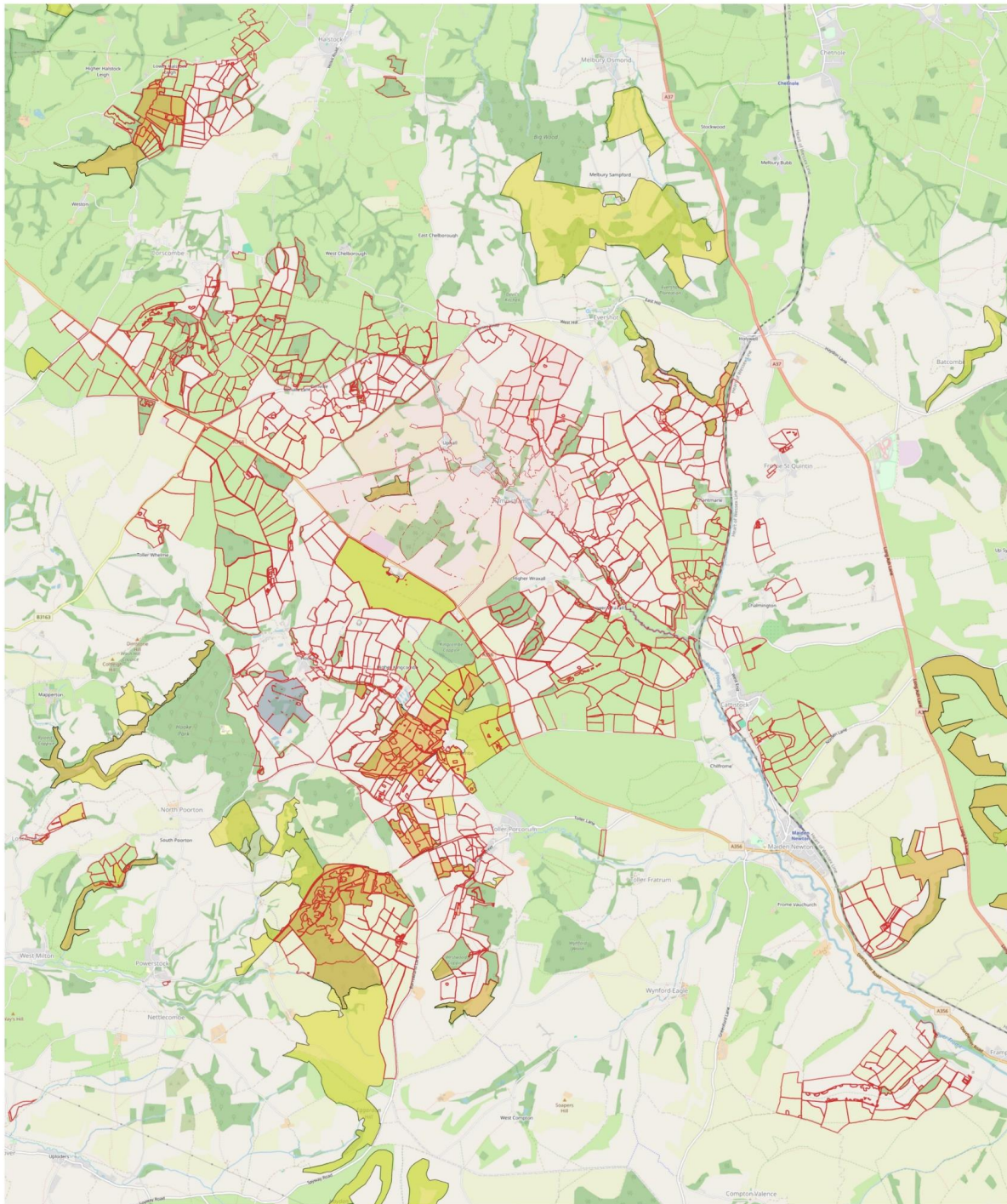


Farm Clusters

A group of farmers brought together under shared aim and geographic location to collectively deliver benefits for

- **Soil**
- **Air**
- **Water**
- **Wildlife**





**This Cluster is 3500 hectares
 comprised of 20 farmer members**

Setting the baseline 2022 - 2024



Wintering Birds

Breeding Birds

Priority habitat and additional

Butterflies and wider pollinators

For the Dorset Downs Cluster, how much land was surveyed:

Farmland birds 3,438 ha

Butterfly surveys were conducted across priority habitat on ten farms (240ha)

Botanical surveys of new and existing Priority Habitat conducted on ten farms (200 ha)



Results

- Chalkhill blue and Adonis Blue
- Marsh Fritillary
- 40 hectares of additional Priority Habitat was found
- The numbers of breeding Corn Bunting were of regional importance
- Densities of all farmland birds above average compared to regional, national averages
- Four new records for section 41 moth species
- Target species Duke of Burgundy and Marsh fritillary were not found on some known sites
- Spring cropping was shown to provide best winter food sources



What Next

1. Maintain and celebrate existing species and achievements
2. Identify areas that could be improved
3. Map key habitats and potential opportunities to create and link them in the landscape
4. Agree actions for the Cluster
5. Secure funding for habitat enhancements and re-survey
6. A strategic Landscape Enhancement Plan





Lessons for others

- 1. Funding – Who will pay for baseline? It is expensive to get this data**
- 2. Who will pay for monitoring and repeat survey**
- 3. Allow time to analyze and interpret data and relay data to the landowners and make recommendations**
- 4. Not all farmers open to having surveys**

Thanks to

Dorset National Landscape – Farming in Protected Landscapes program

Professor Tom Brereton

Dave Chown

Butterfly Conservation

Mariko Whyte

Thanks to the farmers in the Dorset Downs Cluster for consenting to the survey