

Brit Catchment Recovery Project

(Working title)

Dr Sam Rose

Exec Director, West Dorset Wilding

Today's talk

- West Dorset Wilding
- Landscape recovery
- The Brit Catchment Recovery Project
- Key action points

West Dorset Wilding

West Dorset Wilding

- Formed end 2021 – in discussion for much longer!
- Landowner and farmer initiated and led
- 5 trustees
- 2 regular freelancers as staff (1-2 days/week) and others helping LR
- LR will allow us to expand significantly

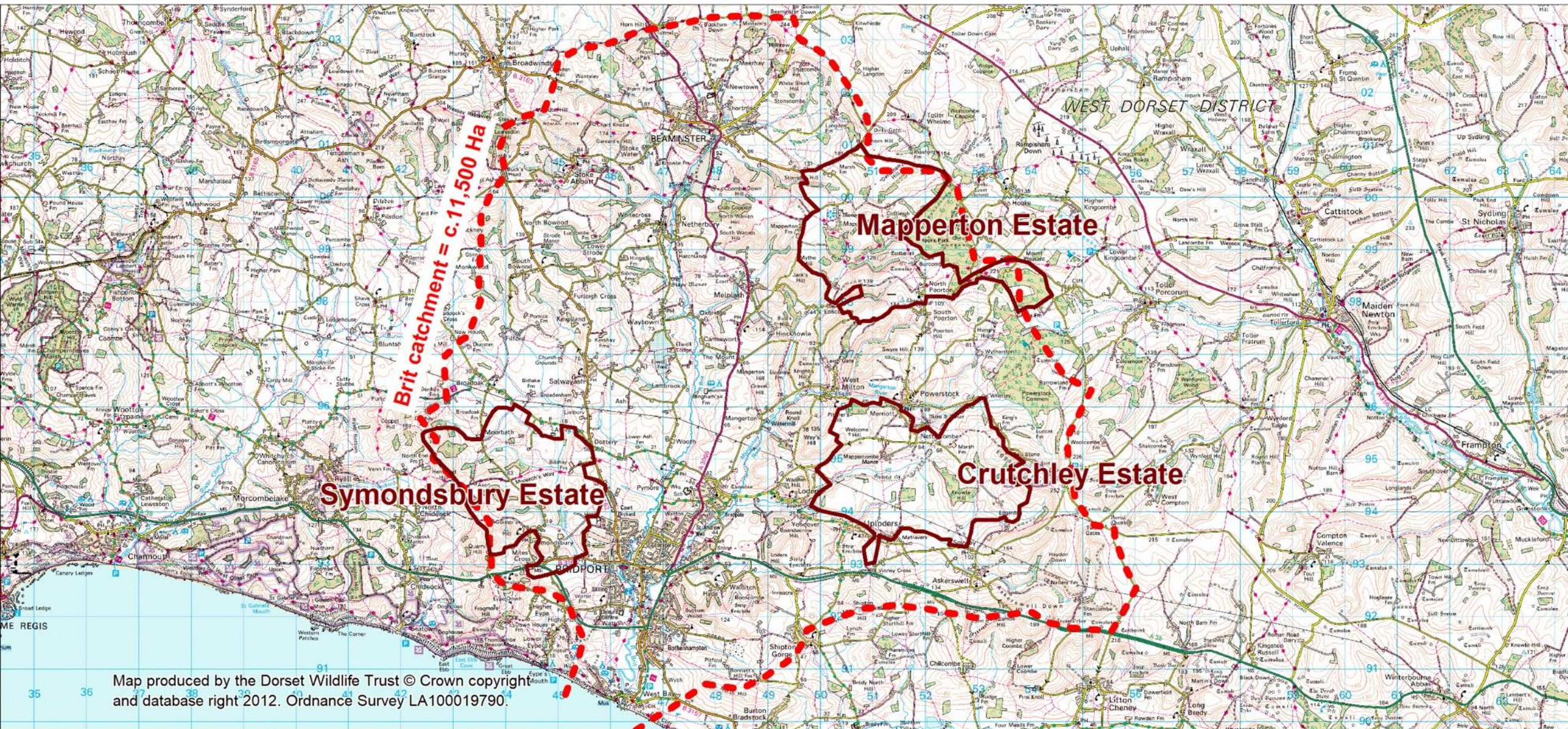
West Dorset Wilding

3 legs of the milking stool

- 1) natural process-led restoration
- 2) regenerative agriculture
- 3) reconnection with nature and the countryside - wellbeing



Initial focus on the wider Brit catchment – we have to start somewhere



Map produced by the Dorset Wildlife Trust © Crown copyright and database right 2012. Ordnance Survey LA100019790.

Vision

Our vision is for a West Dorset with more wildlife and biodiversity, improved water, air and soil quality, better natural flood management and through natural processes, is tackling the impacts of climate change. We want to reconnect people with nature, enabling them to as enjoy its wildlife and habitats in all its beauty and diversity.

West Dorset Wilding

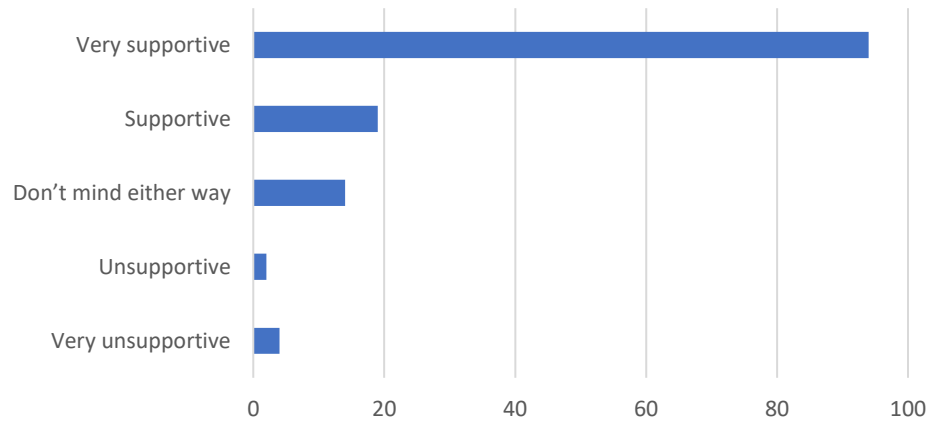
- BCRP will be one project, there have been and will be others
-

Beavers in the Brit

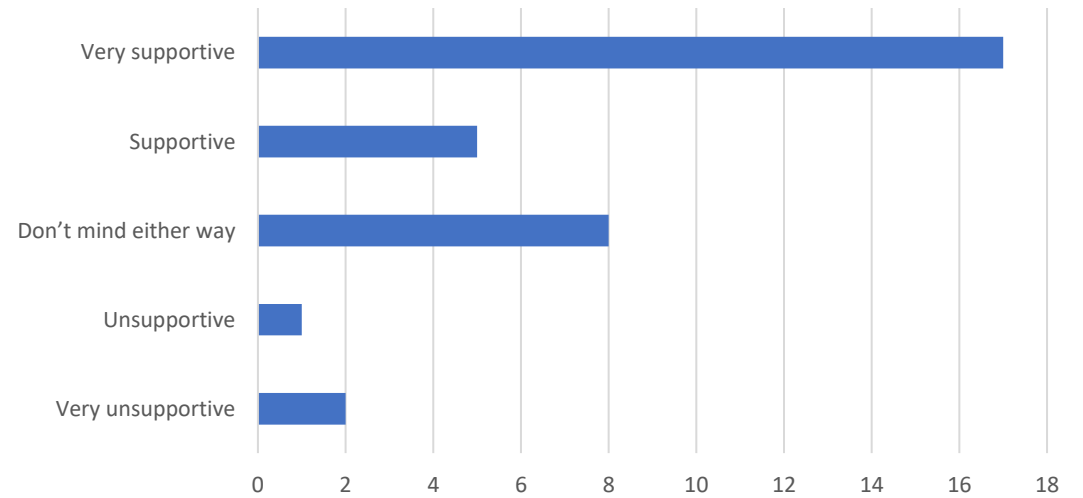
- Enclosures
 - Mapperton
 - Slape
- Public consultation
 - PR – local press, facebook etc
 - Webpage
 - 5 x drop-in village hall sessions, including talks
 - 6 x enclosure tours
 - Display materials
 - Questionnaires – paper and online
 - Engagement with EA and NE

Beavers in the Brit

Support for a wild release of beavers (**residents**)
n=133



Support for reintroduction of Wild beavers (farmers and
landowners) n=33



Landscape Recovery

Landscape recovery

- Part of ELMs, post Brexit changes to agricultural subsidy
- Environmental and social benefits over a 20+ years and at scale
- 500 hectares +
- Combination of public and private money – *blended* finance
- **Locally driven** schemes led by a single organisation - West Dorset Wilding to be the body that pulls this together and as a charity it can have no personal or corporate gain

- 34 projects awarded in this round

Consultation and engagement



Project proposal form
Landscape Recovery round two

Date: 2023

Read the [Landscape Recovery guidance on GOV.UK](#) before you complete this form.

BRIT CATCHMENT RECOVERY PROJECT - PROJECT DEVELOPMENT PHASE

Are you or your organisation VAT registered? Mark answer with an 'X'	YES	NO
You can only include VAT within your project budget if you are unable to reclaim VAT costs the project incurs from HMRC. You will need to demonstrate this with supporting evidence, i.e. accountant's letter.		X
Are you eligible to claim overhead costs (as a % of salary)?	YES	NO
If your organisation is eligible to claim overhead costs? (If salary costs as a separate budget line, then add up to 20% of salary costs as a separate budget line.)	X	

Part 1 - activities and costs that apply across the project development deliverables

Cross-cutting activity and salary costs	Detail of the activity for which you are bidding for funding	Why is this activity necessary for your project? For project start, list deliverables that the role will lead on or contribute significantly to	Cost (€)
West Dorset Wilding Exec Director (ED) @ 0.3FTE - 24 mo	The existing West Dorset Wilding Exec Director will have oversight of the project and will lead on the private finance management, procurement of contracts, financial management, procurement of contracts, public relations, all areas of project, specifically Strategic overview and Business Modelling.	Project management and coordination of project activity management of project staff, responsibility for risk, financial management, procurement of contracts, public relations, all areas of project, specifically Strategic overview and Business Modelling.	€1,000,000
Project Manager (PM) - 0.8FTE 22 mo	Lead on land use change, land manager support, development, access plan and GIS, Monitor Land management plan, M&E, Sustainable business plan.		€500,000
Project officer - Land (POK) - 1FTE 21 mo			€300,000

Land manager support form

Landscape Recovery project name: **Brit Catchment Recovery Project**

Lead applicant: **West Dorset Wilding**

Form ID number(s) [use this text box to link the form to land on the project area map - you can list multiple numbers if needed, for example if you own land with multiple tenants]:
001
036 - TENANT
005 - TENANT

I write in support of the above-named project's vision and their application to the Landscape Recovery scheme on my behalf.

I understand that if successful, the project may be offered a project development phase agreement, funded by Defra for up to 2 years.

I am aware that the purpose of the project development phase is to plan for implementation of the project's vision, and that as a result Defra may invite the project and its land managers to design a separate implementation agreement.

I understand that at the end of the project development phase, projects would only progress into the project implementation phase if all parties are happy to sign the implementation agreement.

I confirm that (please tick one):

I will have management control over the land identified in the attached map during the proposed project development phase and/or implementation phase and give my permission for the land to be included in the above-named application.

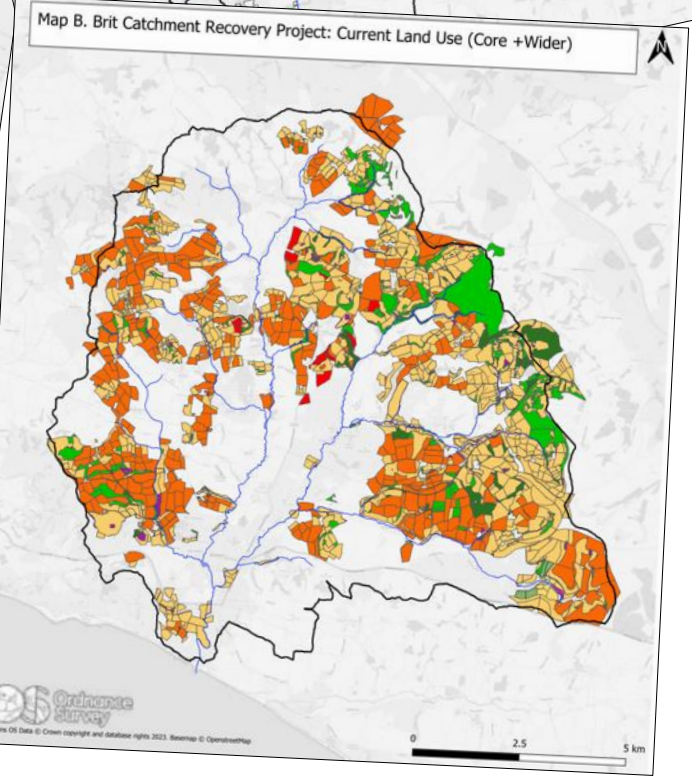
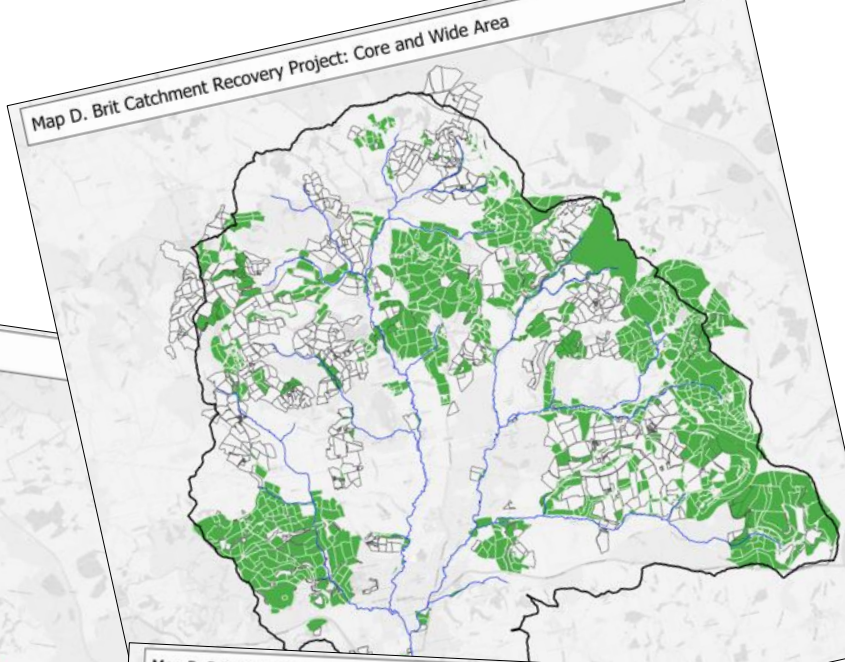
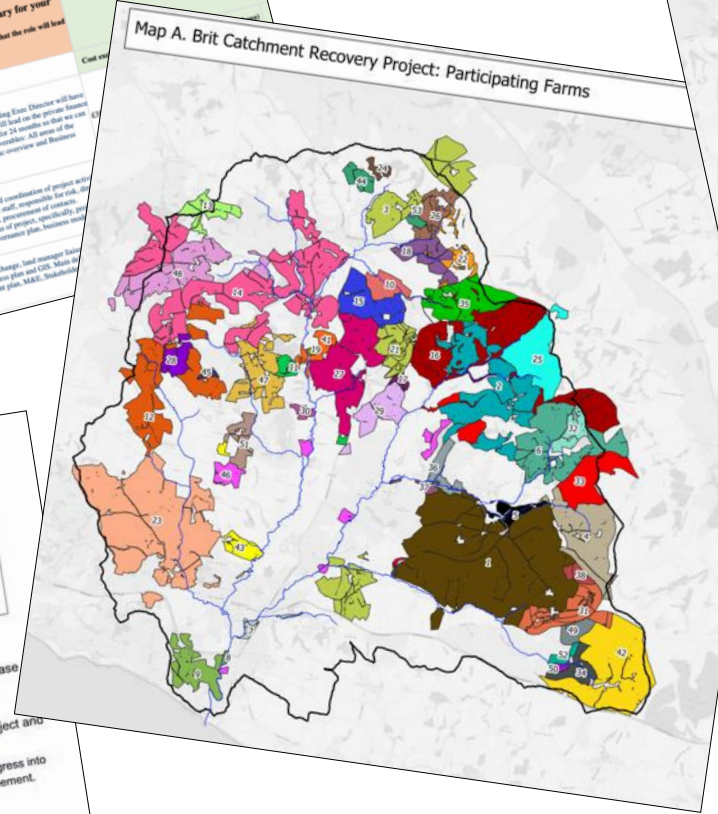
I do not have full management control or I have partial management control over the land identified in the attached map during the proposed project development phase and/or implementation phase. The other relevant people or organisations with full or partial management control have also completed one of these forms.

Signature: *Arthur Cawichley*

Name (please print): **ARTHUR CAWICHCLEY**

Date: **27th JUNE 2023**

Business name: **CAWICHCLEY FARMS**
WRECCOMBE FARM, WRECCOMBE, DT83SS



Email from Defra

Dear **West Dorset Wilding (Brit Catchment Recovery Project)**,

We would like to thank you for applying to Landscape Recovery Round 2. We appreciate the effort you put into your application. Our panel were impressed with the high quality of the applications.

Outcome

The evaluation of all the applications has now been completed and we are delighted to offer your project the opportunity to progress into the Landscape Recovery enrolment phase. Thank you for your willingness to take part in our scheme and for your ambitious application.

WOW!

Landscape recovery

- Enrolment stage (we are currently 'shortlisted') - 14 weeks
- PDP stage – 2 years
 - Grant agreement between Defra and WDW
 - Preparation for implementation stage
- Implementation – 20+ years
 - Agreement between Implementation body and Defra
 - Agreements between farmers and implementation body



Brit Catchment Recovery Project

*On behalf of the land managers and people of the wider Brit catchment, West Dorset Wilding are proposing a **unique, ambitious, multi-generational, catchment-scale project for meaningful and lasting recovery of nature in West Dorset**, alongside social and economic co-benefits for the community.*

*We have a vision of a Brit catchment **teeming with wildlife in the grasslands, woodlands and wetlands, with thriving and sustainable local food production, increased public connection with and benefit from nature, and more opportunities for sustainable jobs, education and tourism.***

*Landscape Recovery offers an opportunity to kick-start this **50+ year vision** by giving land managers long-term security to underpin the changes they want to make.*

*Our approach shows that through a **combined approach of land changes/maintenance and supporting activity**, we will give the wider Brit catchment the best chance possible to meet the outcomes as set out in Landscape Recovery. The whole here is greater than the sum of the parts, and collaboration and scale are essential.*

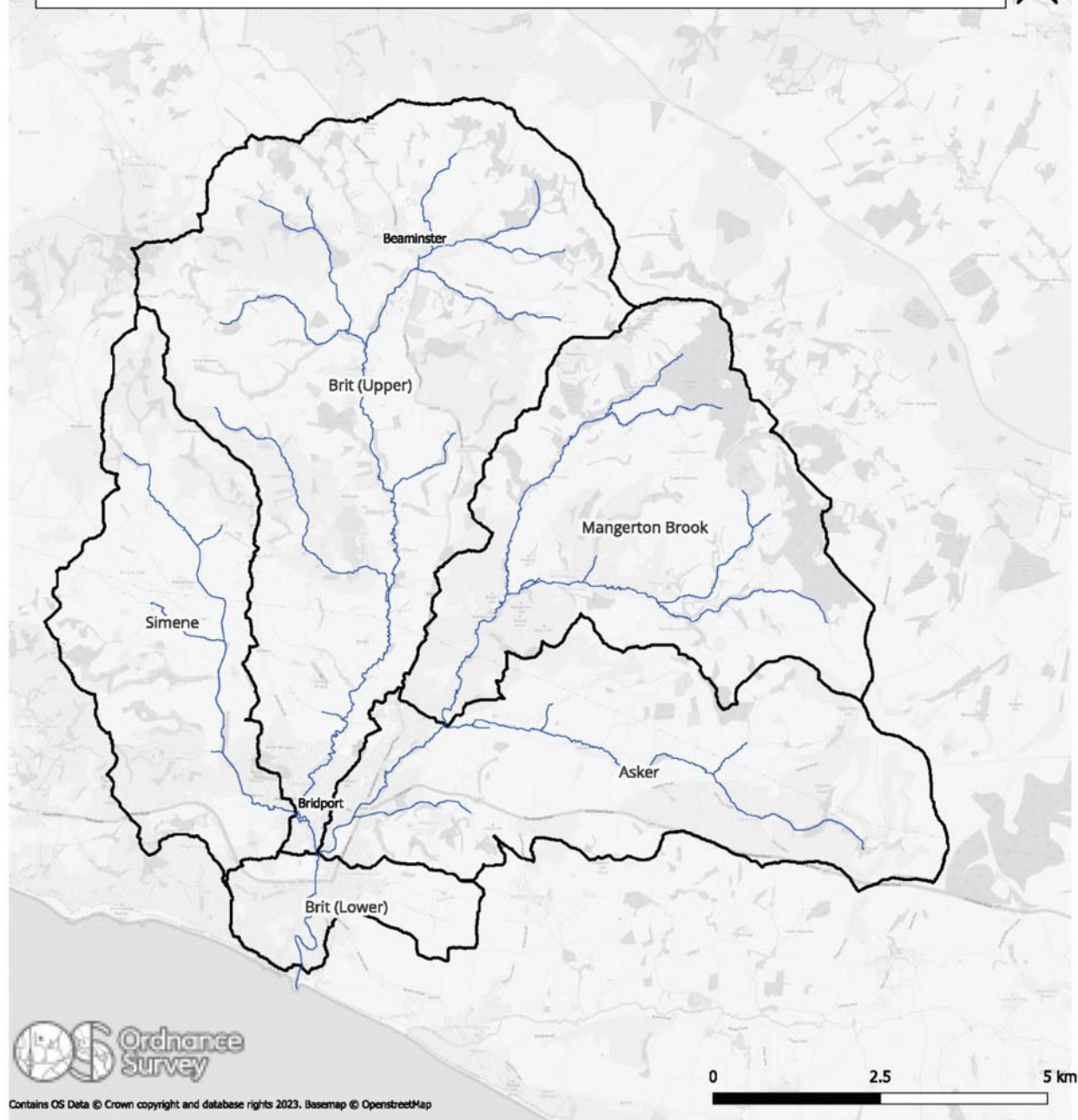
High Level Objectives (HLOs)

We will build a set of KPIs as part of the PDP Monitoring and Evaluation plan, and it is useful to set out our **draft** HLOs here:

By 2050 we intend to see:

- 1) an **increase of 50% in the diversity** and **100% in the abundance** of key indicator species for the catchment, notably birds, bats, selected invertebrates and fish;
- 2) a catchment scale **increase of 100% in soil carbon, 100% in above-ground biomass** and **200% in wetland creation**;
- 3) all catchment rivers in WFD condition 'high', a **25% reduction in peak flow** at Bridport, and **an average 10% elevation** of base-flows in times of drought;
- 4) **at least 50%** of the rural parts of the catchment are under better management for nature, an increase on the 38% in core here. 50 by 50!

Brit Catchment Recovery Project: Catchment Map



Brit Waterbody Catchment

— Main Rivers Catchment

Contains OS Data © Crown copyright and database rights 2023. Basemap © OpenstreetMap

Outcomes

Improved **biodiversity**

Increased **carbon capture**

Improved **water quality**

Maintained **food production**

Better **flood management**

Social and community benefits

LAND CHANGES

Tree planting and natural regen

Reintroductions feasibility – Beavers / water voles - tbc

SUPPORTING ACTIONS

Forest and woodland improvements for nature and/or maintenance

Hydrological changes feasibilities – rewiggling, Lower Brit wetland creation, beaver analogies, sediment traps

Riparian land reversion to wetland and offline pond creation

Venison CIC feasibility

Species-rich and low input grassland creation

‘Flying Pig’ club development

Arable and improved pasture ‘reversion’ to scrub and wood pasture

Outcomes
Improved biodiversity
Increased carbon capture
Improved water quality
Maintained food production
Better flood management
Social and community benefits

Education, volunteering, citizen science

Schools and forest schools

Protected Sites maintenance and/or improvements

Landowner / manager training e.g. river management

Social Wilding – public volunteering

Intensive farming changes to organic or regen

Local food security links

Existing regen or organic farms long term commitment

LAND CHANGES

Tree planting and natural regen

Forest and woodland improvements for nature and/or maintenance

Riparian land reversion to wetland and offline pond creation

Species-rich and low input grassland creation

Arable and improved pasture 'reversion' to scrub and wood pasture

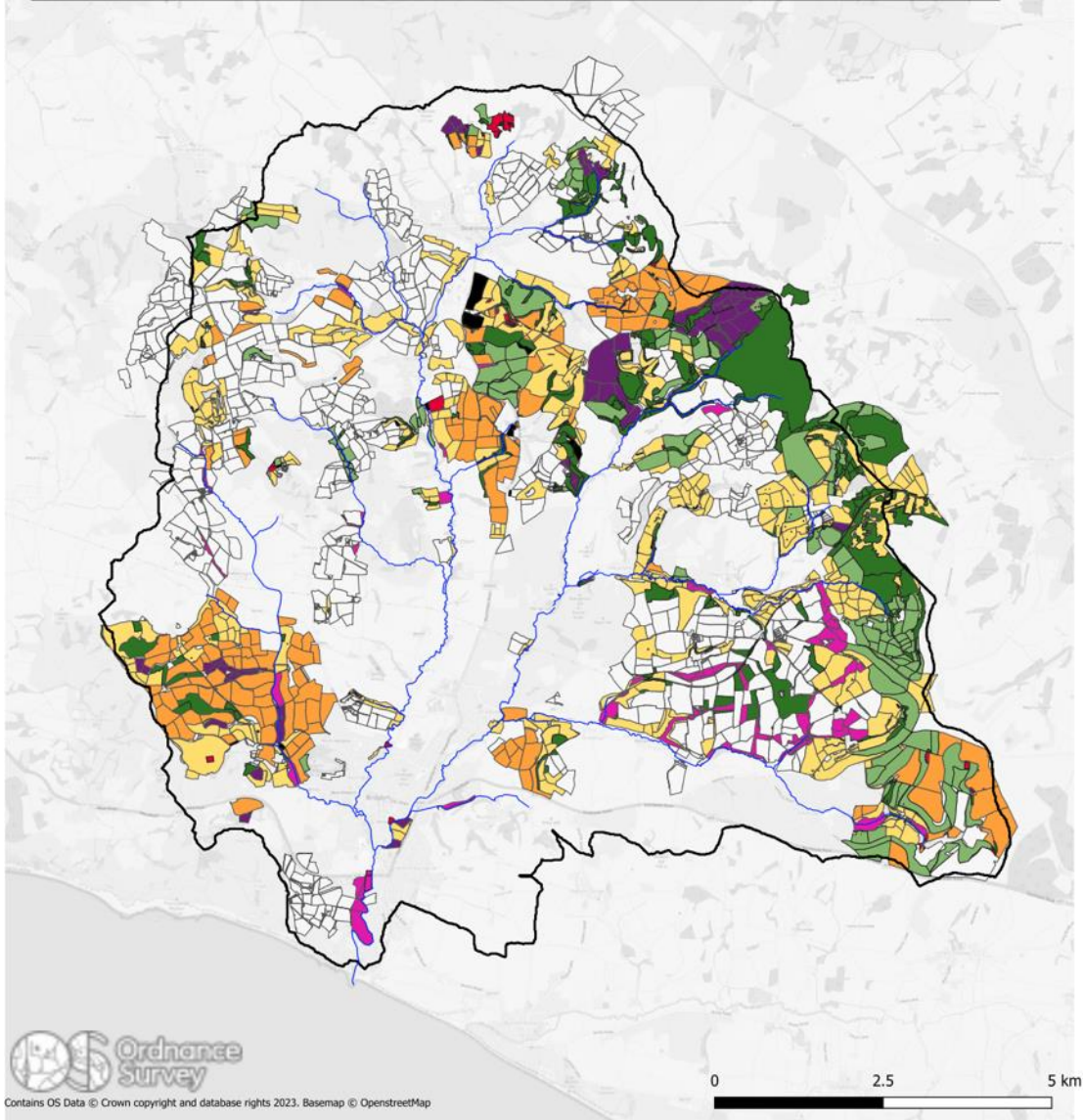
Protected Sites maintenance and/or improvements

Intensive farming changes to organic or regen

Existing regen or organic farms long term commitment

Outcomes

- Improved biodiversity**
- Increased carbon capture**
- Improved water quality**
- Maintained food production**
- Better flood management**
- Social and community benefits**



Intended Land Use (Core)

- | | |
|---|----------------------|
| Low and No Input Grassland | Natural Regeneration |
| Wetland Creation | Pond |
| Regenerative Agriculture | Wider Area |
| Wood pasture and parkland | Other |
| Woodland | Main Rivers |
| Species Rich Grassland (maintained and/or enhanced) | Catchment |

53 landowners

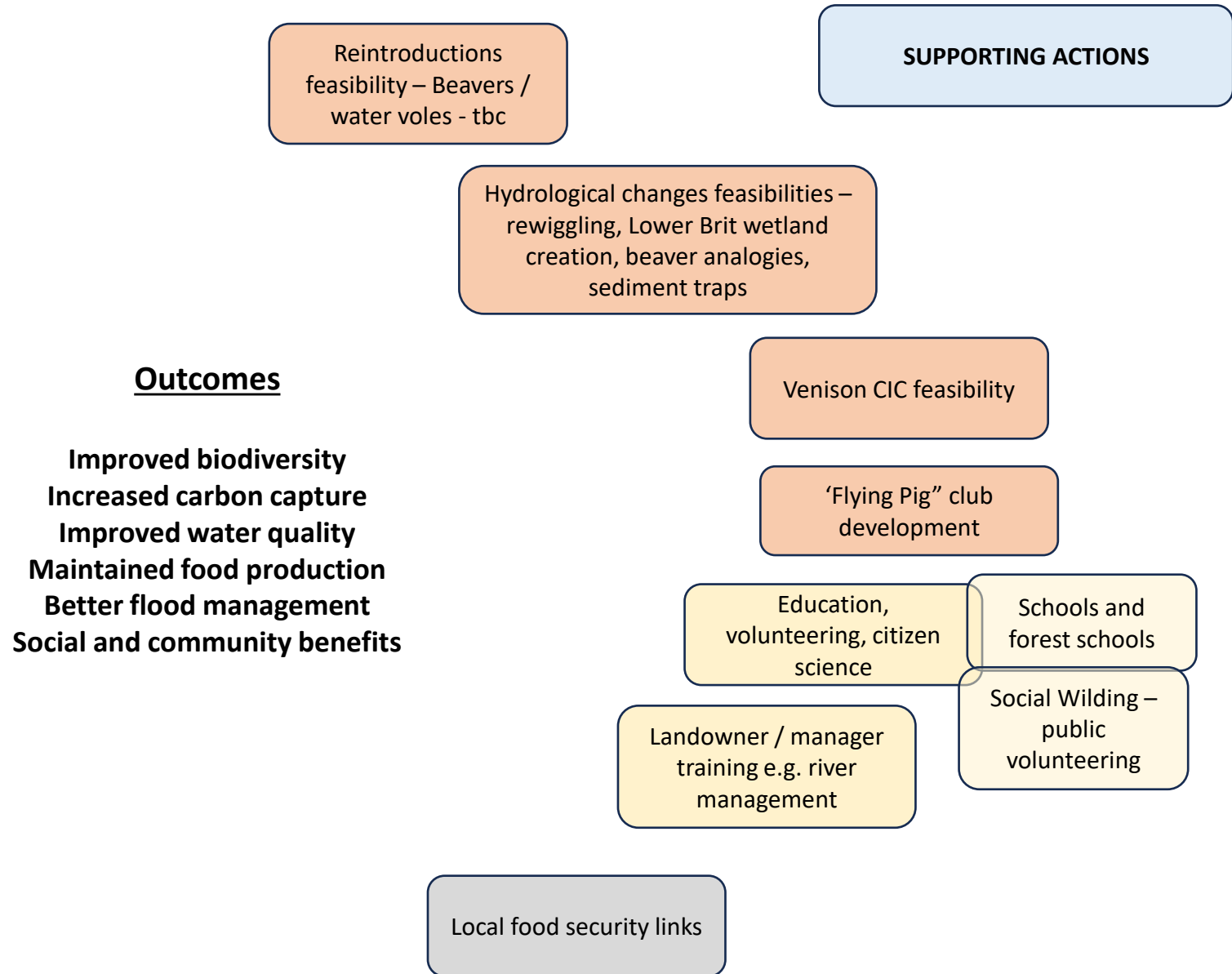
c. 3,700 ha. Core – 38% of rural area in the wider catchment

c. 8,000 ha. core + wider area (not in scheme)

We can take in more people into the scheme, but will get no more money at this stage

Intended land-use:

- Low/no input grassland
- Species rich grassland
- Wetlands and riparian corridors
- Wood pasture
- Scrub and natural regeneration
- Woodland
- Offline ponds
- Regenerative and regen/organic farming



Key action points

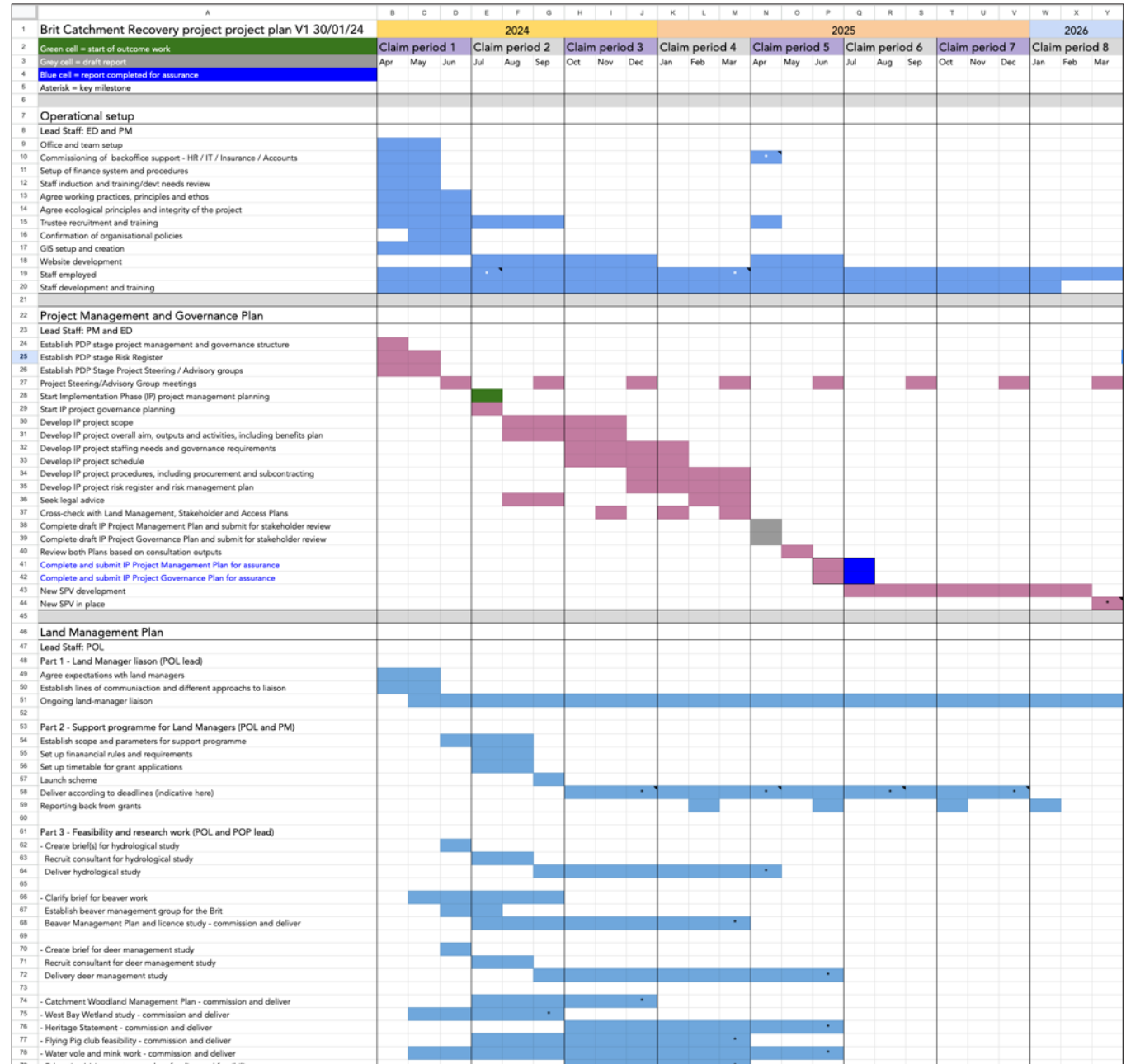
Key action points

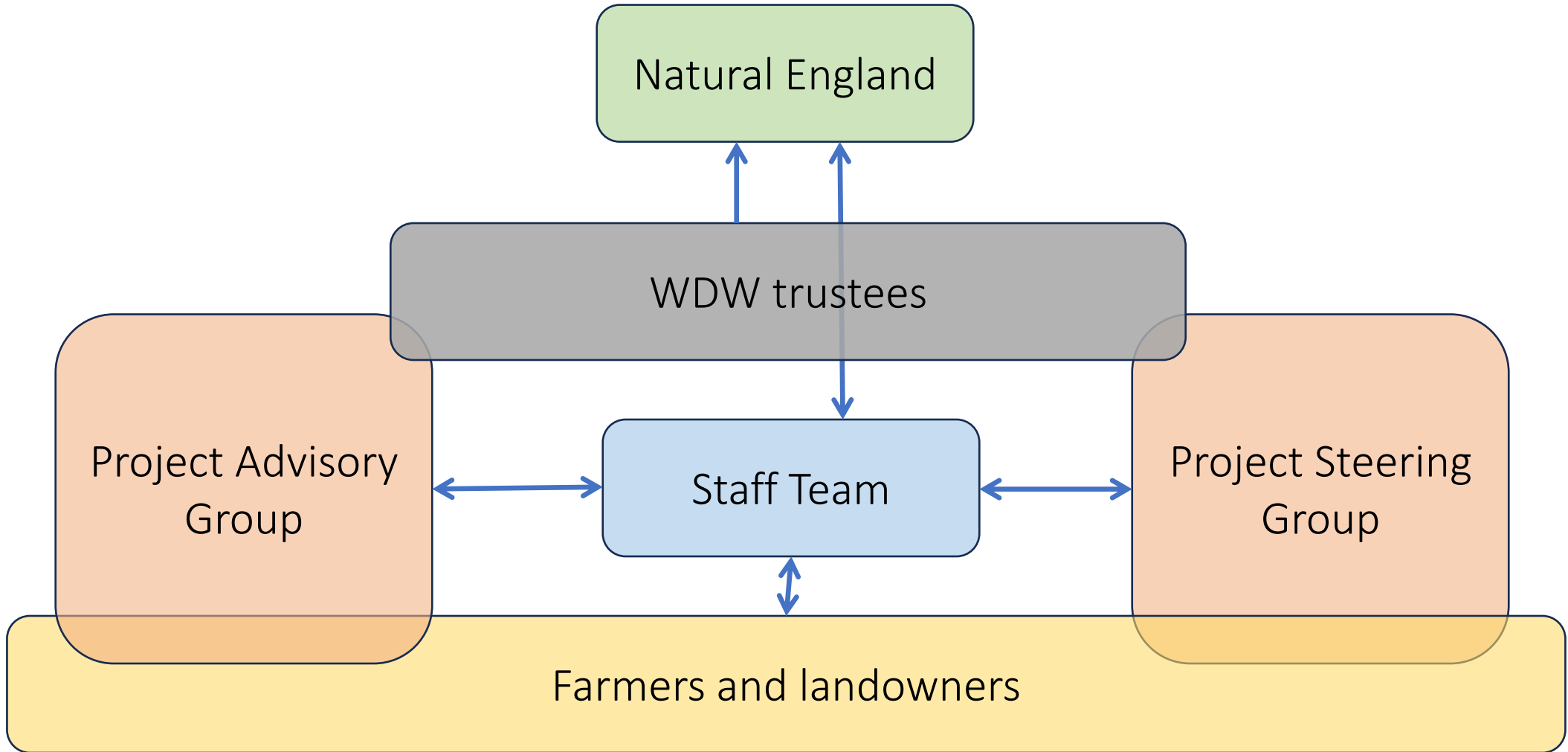
- Complete enrolment
- Upscale organisation
- Employ staff

- Set up farmer-led project steering group
- Build on collaborative ethos
- Agree ecological vision and approaches

- Continue existing and start conversations now!

The mother of all Gantt charts!





Thank you