

Dorset Nature Recovery Workshop

BCP Council nature based solutions

Martin Whitchurch – Strategic Lead for Greenspace
2nd November – 9.30am-1.30pm

Green Spaces & Climate team strategic work

Green
Infrastructure
Strategy

Urban Greening
Guide, GI
standards

Green Heart
Parks &
Stour Valley Park

Nature Recovery
Project

Tree and
Woodland
Strategy

Green finance
and natural
capital
accounting

Net Zero
Mitigation

Climate Safe
adaptation

Ecological
restoration

BCP Green Net Strategic Plan

CRANBOURNE CHASE & WEST WILTSHIRE DOWNS AONB



Vision: Our ambition is to secure investment in the delivery of a multi-functional green infrastructure network, weaving together and enriching green and blue spaces throughout the city region. We call this our Green Net.



BCP Projects page for background on our Future Parks project: [Future Parks project - BCP Projects](#)

GI Evidence Base



Evidence base:

- Public survey, 803 responses
- Site audits of over 400 open spaces
- Range of case studies
- Policy context
- GIS datasets and extensive mapping
- National standards
- Natural capital assessment

Value of Parks and Green Spaces

93% of residents use **parks** at least **once** in the last year³



BCP Council allocates £5.4m per annum on **green space management**³

Green spaces generate c.£4.5m **revenue** per annum³



Benefits of BCP's **parks** estimated at **£231m** per annum (30-40% higher if including beaches)⁴

85% Public satisfaction in BCP Open spaces

➤ Natural Capital report:

BCP parks receive an estimated **9.7m recreational visits per year**

Resulting in **£231m pa in gross benefits** to local communities

£209m pa of which are health benefits

Average value of £20 per individual visit to a green space

- Adopted at BCP Cabinet - part of supporting evidence for BCP Local Plan (2024). Available: [Green Infrastructure Strategy \(bcpCouncil.gov.uk\)](https://www.bcpCouncil.gov.uk/green-infrastructure-strategy)
- Strong platform for funding bids, advocating and championing, future green space development work and policy.
- Public engagement: Green Infrastructure Strategy: <https://haveyoursay.bcpCouncil.gov.uk/green-strategy>
- Urban Greening and Design Code; coaches in the community delivered with The Parks Foundation. Oct 2022 – Jan 2024.
- Embedding with Biodiversity Net Gain delivery policies
- Setting a GI delivery plan and priority work setting for green spaces.



The type, amount and quality of green infrastructure, and its proximity to where people live, determines the benefits that it can provide.

Stour Valley Park Partnership

Major Gateways
Private facilities and existing points along the route to establish the Stour Valley Way as a visitor destination.

Minor Gateways
Each access to the Stour Valley Way will have a clearly marked entry point. This gives the route a recognisable character. Clear waymarks give visitors confidence to explore.

Hicks Heritage Farm (Proposal)

Wildlife Trails
Extension of the route from the Stour Valley Local Nature Reserve via Berry Hill to Throop Hill to include a wider range of wildlife viewing opportunities.

STOUR VALLEY PARK
PUBLIC WORKSHOP
GOVERNANCE #3
Thursday
March 3, 2022
2pm - 3:30pm
Online
Book tickets at stourvalleypark.uk



The Parks Foundation - Pilot Parks & Nature recovery



Three Pilot Parks were chosen:

Alexandra Park, Poole
Watermans Park, Christchurch
Winton Recreation Ground, Bournemouth

With the aim to:

- Increase biodiversity
- Engage local communities and increase the number of people in the parks as well as how long they spend there
- Test whether we could bring urban community parks to life.

Surveys and masterplans

- C.400 residents completed surveys in summer 2020 on what they'd like to see change in the park.
- Three masterplans were produced by BCP Council Landscape Designers.



Staff



2 experienced Parks Activators

were employed in spring 2021 by The Parks Foundation to engage the local community by delivering fun and educational nature-based activities, volunteering opportunities, and making physical changes in the parks.

Trading

Opened a community café at Winton which is now self-sustaining

Explored trading options at Alexandra Park and Waterman's Park with management, options suggested.



1,679 attendees
249 activities

249 activities were delivered including NatureTots, volunteering sessions, family Park Life events, moth nights and astronomy evenings.

Volunteering

2 new GreenFingers volunteering groups were established, providing regular volunteering opportunities.

8 regular attendees



The 2 new community gardens yielded lots of vegetables that were donated to local people in need via other charities.



Improvements for wildlife

These changes help provide vital food and habitat for local wildlife in the parks:



510 trees planted



5,000 bulbs planted



130m of native hedgerow planted



25 bird and bat boxes installed



3,350m² of wildflower meadow sown



5,700m² of meadow left as 'no mow' areas



Rare Southern Damselfly has been spotted at Watermans Park.

Funding

In addition to the FPA funding:

£6,000

Donated to our wildflower campaign through **The Big Give's Green Match Fund**.

£16,525

Granted from **Trusts and Foundations** for improvements to the three parks

415 trees

Donated from **Woodland Trust and The Conservation Volunteers**

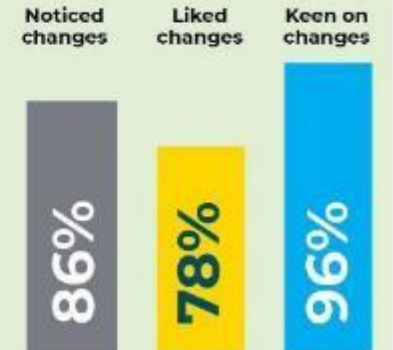
Feedback

Consultation stalls were carried out in September 2021:

c.100 people surveyed in person in the parks over two days.

Changes to the parks had been noticed (**86%**) and liked (**78%**) by most people.

96% of people surveyed were keen on the further planned changes to the parks.



Developed into Nature Recovery project in 2022 working across 11 parks with 4 Parks Activators with an experienced landscaper

The Parks Foundation - Nature Recovery Project

- 8 BCP Parks – TPF Funding from National Lottery Heritage Fund
- Designs and nature recovery plans drawn for each
- Varying levels of intervention
- Local consultation, Councillor and stakeholder engagement, volunteering & practical work to improve spaces for nature.



Thanks to funding from the **Green Recovery Challenge Fund** (during 2022 we'll be making some changes to Slades Park and would love to hear your thoughts).
Find out how to get involved and provide feedback on these ideas at: www.parksfoundation.org.uk/nature-recovery

1 Wildflower meadow
Great for bees, bugs and butterflies. This meadow will provide a home for our pollinators to feed and shelter in.

2 Foraging plots
We'll create some amazing foraging plots for you to help yourselves to: Dog rose, blackberries, hawthorn and crab apple for jellies, jams and pies... cobnut for butter... and sloe for gin.

3 Wader scrape
A small wetland area sown with wildflowers provides a different kind of habitat. We hope to attract dragonflies and wading birds.

4 Orchard of fruit and nut trees
An edible circle of fruit and nut trees will create a little oasis for people to visit. We can't wait to see the blossom in spring. They provide a rich and early source of pollen and nectar as wildlife starts to venture out after the winter months.

5 Native shrub planting
Planting of native shrubs will form thickets and hedges which create refuge and nesting sites and provide food for songbirds and small mammals.

The Parks Foundation - Nature Recovery Project

Nature Recovery Plan BRANKSOME RECREATION GROUND

1 Native shrubs and hedgerows
Planting of native shrubs will provide refuge and nesting sites for songbirds and small mammals. The berries of hawthorn and blackthorn, and the nuts of hazel are a great source of food for these too.

2 A carpet of spring flowers
If water the oak trees, a colourful carpet of bluebells, anemones, clover and daffodils will provide an important source of nectar for insects early in the year.

3 The Wetland Garden
A small wetland garden, full of grasses, ferns and flowering plants will create a different kind of habitat. We hope to attract dragonflies and frogs.

4 Wildflower meadow
Great for bees, bugs and butterflies! This meadow will provide a home for our pollinators to feed and shelter in.

5 Wood stacks
Piles of deadwood make fantastic micro-ecosystems. Watch them evolve over time! The decaying wood supports a range of fungi.

6 Bird & bat boxes
Included throughout the park, these nesting boxes will help our local birds and bats thrive.

Helping nature thrive in our parks

Working Together:
Parks Foundation
Parks Foundation



A new Wetland Garden at BRANKSOME RECREATION GROUND

Proposals
A small bog garden full of grasses and flowering plants will create a new wetland habitat in Branksome Recreation Ground, just off The Field Office.

The plants will help to regulate the drainage in this area so they retain water conditions at the same time. They provide a habitat for different insects, such as damselfly and frog.

Planted some blocks will create a good path through part of the garden to allow children to play this nature.

Clearly placed stone markers to the edge of the path and a knee tall wooden structure to the path.

These will be an important part of the garden and will help to identify the plants.

KEY

1. Draining stone
2. Interpretation board
3. Wood planting
4. River will
5. Wildflower meadow

Typical Wetland plants

Reference images

Working Together:
Parks Foundation
Parks Foundation



GREEN HEART PARKS

We believe that our community parks can thrive when we work in partnership. The co-management of our community parks, where BCP Council continues with its current levels of maintenance and The Parks Foundation provides additional benefits

including fundraising, community engagement, nature education, biodiversity improvements and café management. Continual collection of data about park use, satisfaction and changes in demand will help create spaces that communities can cherish.

Staff Efforts

Co-ordination of the sites by Parks Activators who will bring together maintenance teams, local stakeholders, volunteers etc.



Team Park - Volunteers

Increased breadth and depth of volunteering meaning more opportunities to get involved.



Grants, Donations Legacies

Generate additional funding for parks by working with trusts, philanthropists and corporate partners, as well as promoting donations from residents.



Greenspace Economy

Increase income through the improvement of redundant buildings, introduction of new facilities and fundraising events.



Healthier communities

More welcoming spaces will encourage longer visits that will improve the mental and physical wellbeing of park users.



Closer communities

Work with individuals and groups to achieve specific goals, resulting in a community that feels better connected to their parks and each other.



Safer spaces

Anti-social behaviour and vandalism reduce in parks because of increased activities, informal staff presence and infrastructure improvements.



Connecting with nature

We will improve our parks for nature, creating more habitats for birds, animals and insects, to address the ecological crisis and to give our communities spaces on their doorsteps where they can connect with and learn more about wildlife.



Tree & Woodland Strategy – *in production*

- The Council is preparing a Tree and Woodland Strategy to provide a clear direction for the future management of all trees in Bournemouth, Christchurch and Poole (BCP).
- **Have Your Say** - <https://haveyoursay.bcpCouncil.gov.uk/trees-woods>
- Your feedback will help inform the vision, priorities and actions featured in the forthcoming Tree and Woodland Strategy. Closes 5th Dec.

Have your say

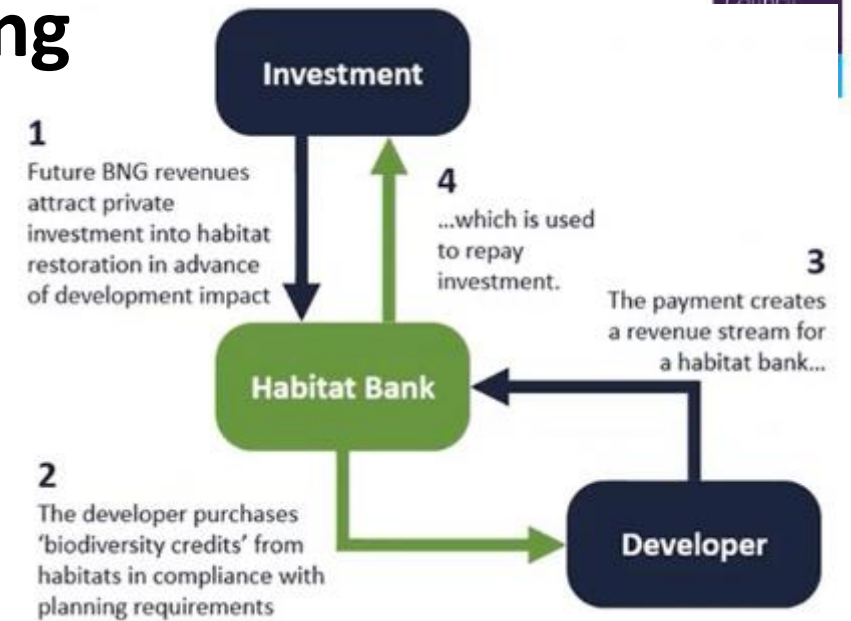


Help develop a Tree and Woodland Strategy
for Bournemouth, Christchurch and Poole

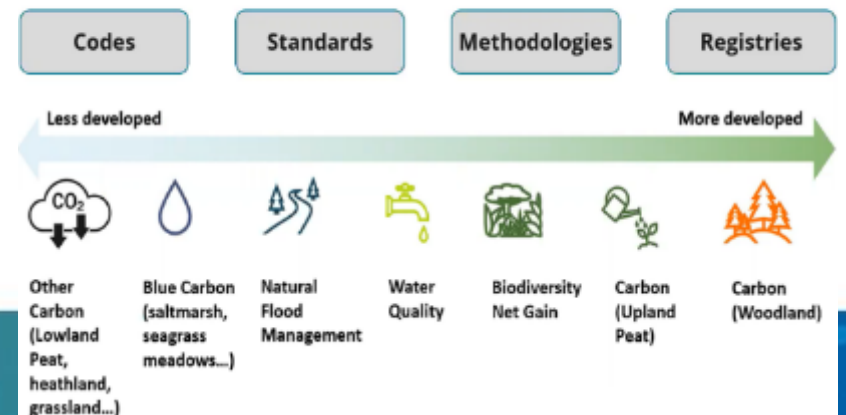


Green finance and natural capital accounting

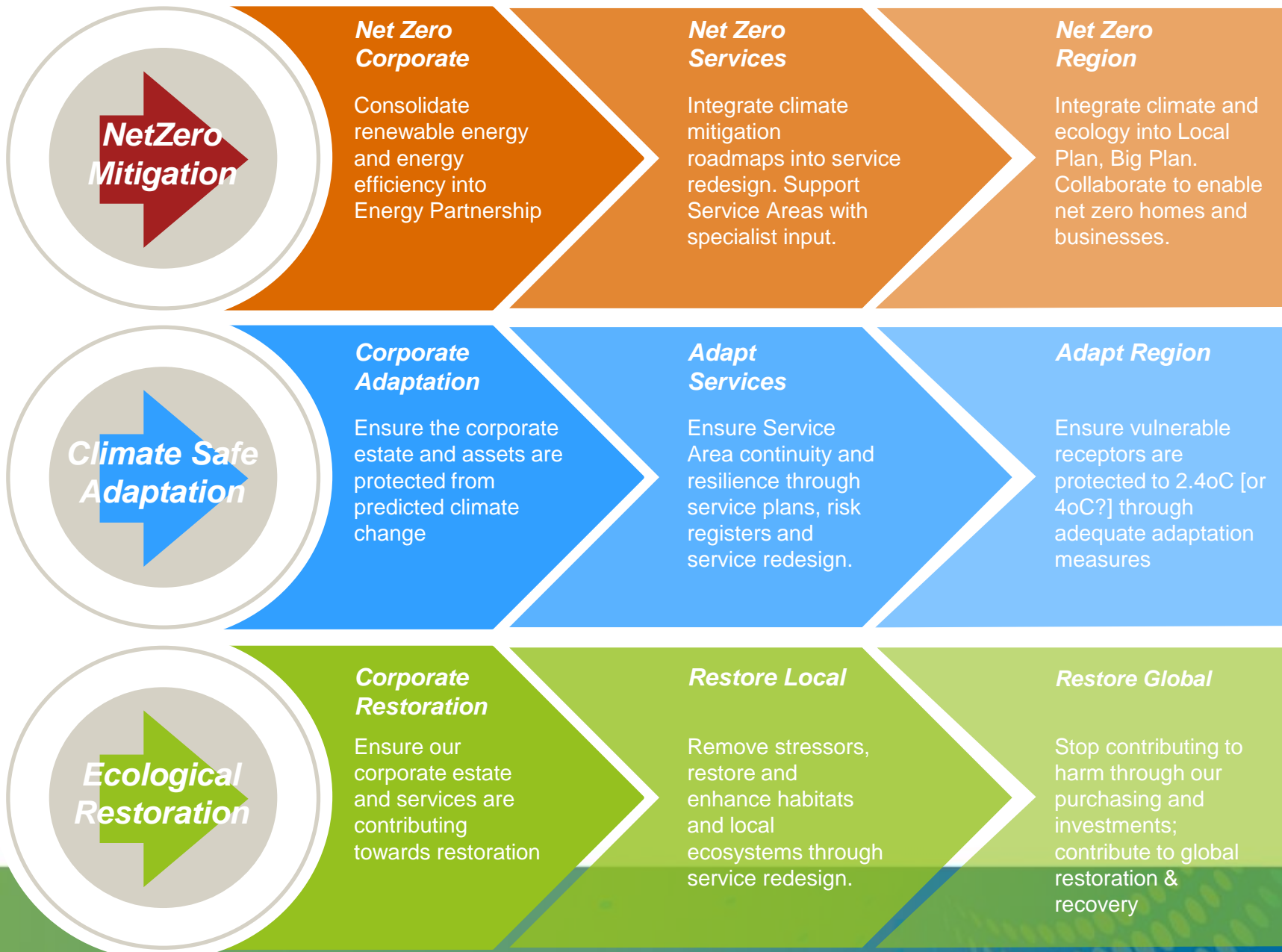
- **Biodiversity Net Gain** - aims to leave biodiversity in a measurably better state than before.
- **Natural Capital, Habitat Banking and Green Finance** – has investors and tens of £m available to invest in environmental schemes. We are working with National Lottery Heritage Fund, National Trust and partners to understand how and where we can access this investment.
- **Natural Environment Investment Readiness Fund** – Future Parks team (NLHF and NT) creating a National Urban Nature Fund – BCP part of cohort,.



As the science is better developed, impact on the environment is more easily measured, but the investment market looks to the presence of codes, standards and methodologies to gain confidence in impact, and future incomes



Climate & Ecology Action Programme: mission statements



Climate Service Plan Priorities 2022/23

Ensure sustainability underpins all of our policies and practices:

- Develop a sustainability strategy with targets by 2023
- Big Plan, the Local Plan, Asset Management Plans underpinned by sustainability

Tackle the climate and ecological emergency:

- Develop a local climate change risk assessment and adaptation plan by 2023
- Develop a strategic energy partnership to help achieve 2030 and 2050 targets
- Define the ecological emergency and set targets by 2022
- Develop a renewable energy and energy efficiency capital works programme for council buildings and estates
- Develop a finance options package for residents and businesses to decarbonise homes and buildings by 2023
- Ensure we realise opportunities to catalyse low carbon developments through the Local Plan and Big Plan

- Thanks for your time
- If you would like any further information on any of these subjects please just ask

Martin.whitchurch@bcpcouncil.gov.uk

