

New Forest  
Land Advice Service



# The New Forest Land Advice Service

Our work to help nature recover and thrive in and around the National Park



## New Forest Land Advice Service



- Julie Melin-Stubbs – Manager
- Rhys Morgan & Tracé Williams – Advisors
- Angela Peters – Restoring Lost Landscapes Project
- Richard Austin – New Forest Rural Skills Project and Volunteer Coordinator
- Gemma Stride – Working Woodlands Project















# Environmental Stewardship, ELMS and Farm Clusters





# Wilding





# New Forest Catchment Partnership and Catchment Sensitive Farming

POACHING & POLLUTION



SLURRY SEEPAGE



CLEAN & DIRTY WATER MIXING



BLOCKED CULVERT





# Cross compliance and NVZ



MIXING  
CLEAN &  
DIRTY  
WATER



SOIL EROSION &  
RUN-OFF

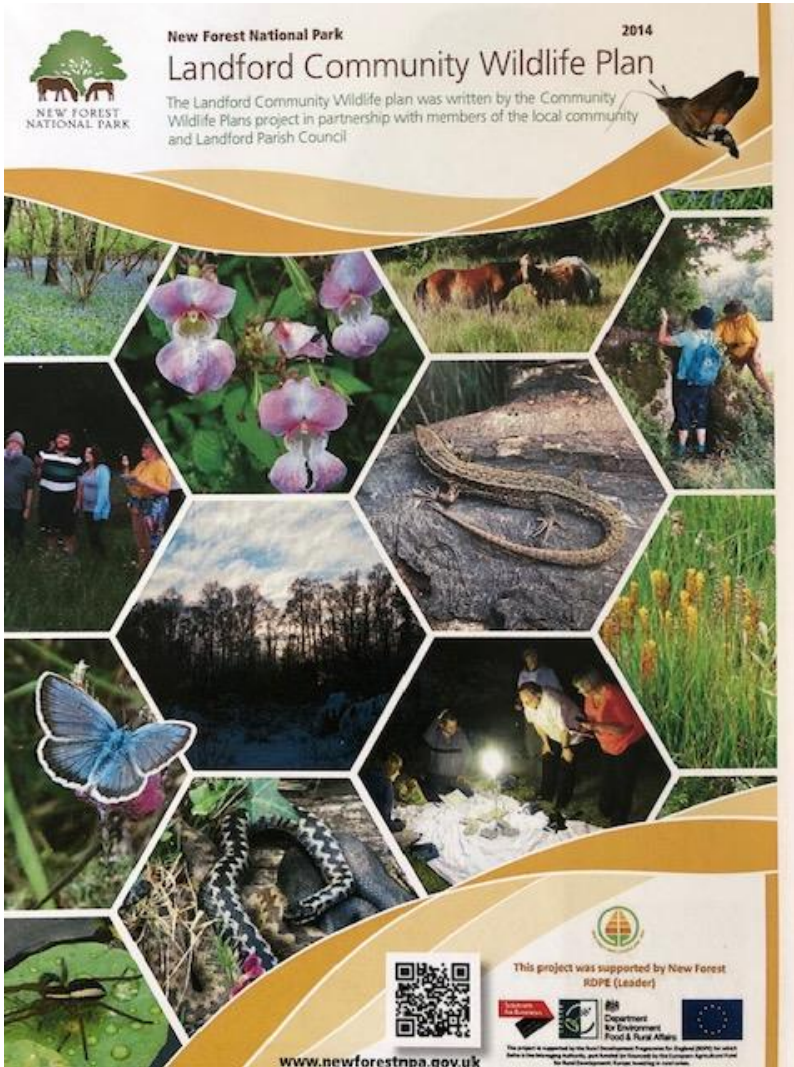


MUCK HEAPS





# Community Wildlife Plans Project





# Better Boundaries Project



Supported by  
**The National Lottery**<sup>®</sup>  
through the Heritage Lottery Fund



















Our Post-Our Future  
Landscape Services

### A better boundary!

This hedge is one of many safety measures that can be used to help wildlife and local farmers and to improve garden health and reduce the risk of pest damage to plants.

It is a natural barrier that can be used to protect your garden from pests and diseases. It is also a natural habitat for many insects and birds, which can help to control pests and diseases. It is a natural barrier that can be used to protect your garden from pests and diseases. It is also a natural habitat for many insects and birds, which can help to control pests and diseases.

For more information on how to create a better boundary, visit [www.ourpostourfuture.co.uk](http://www.ourpostourfuture.co.uk)





**A better boundary!**

This garden is part of the *Wildlife Garden* project, which aims to create a network of wildlife-friendly gardens across the region. The garden is located in the *Wildlife Garden* project, which aims to create a network of wildlife-friendly gardens across the region. The garden is located in the *Wildlife Garden* project, which aims to create a network of wildlife-friendly gardens across the region.

The garden is located in the *Wildlife Garden* project, which aims to create a network of wildlife-friendly gardens across the region. The garden is located in the *Wildlife Garden* project, which aims to create a network of wildlife-friendly gardens across the region.

The garden is located in the *Wildlife Garden* project, which aims to create a network of wildlife-friendly gardens across the region. The garden is located in the *Wildlife Garden* project, which aims to create a network of wildlife-friendly gardens across the region.



## Nature's Stepping Stones



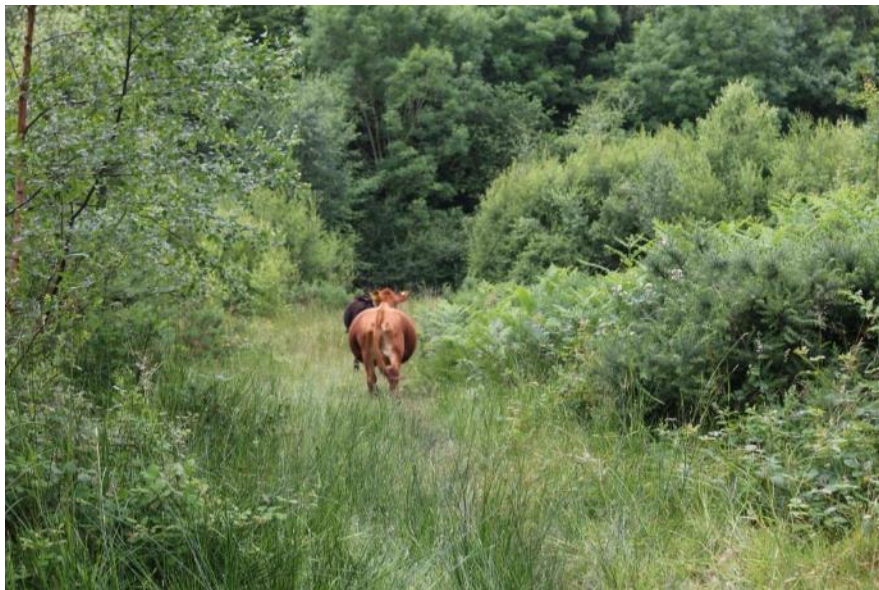














# Working Woodlands

















# New Forest Rural Skills























Volunteering



# New Forest Land Advice Service



[www.newforestnpa.gov.uk/conservation/protecting-nature/land-advice-service/](http://www.newforestnpa.gov.uk/conservation/protecting-nature/land-advice-service/)

