

RESILIENCE FRONTIERS

기후변화의 회복탄력성, 그 경계를 넘어서다

Transformative and Regenerative Climate-Resilient Futures

Songdo, South Korea – 8-12 April 2019

Chris Skelly, Public Health Dorset





5 days

3 Objectives

8 Pathways

I. Foster a 'Nature First' Culture

To ensure environmental stewardship



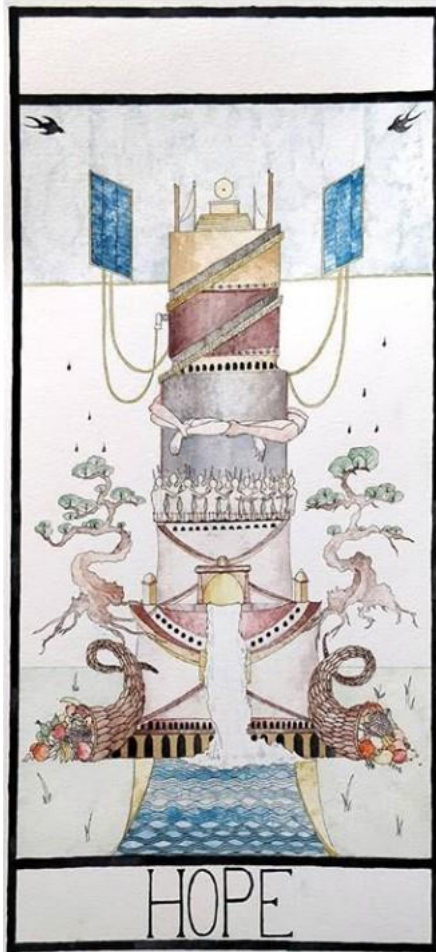
Policy pathways must

1. Build on
 - Local knowledge
 - Indigenous practice
 - Inclusive public dialogues
2. Enable life-long learning in environmental stewardship



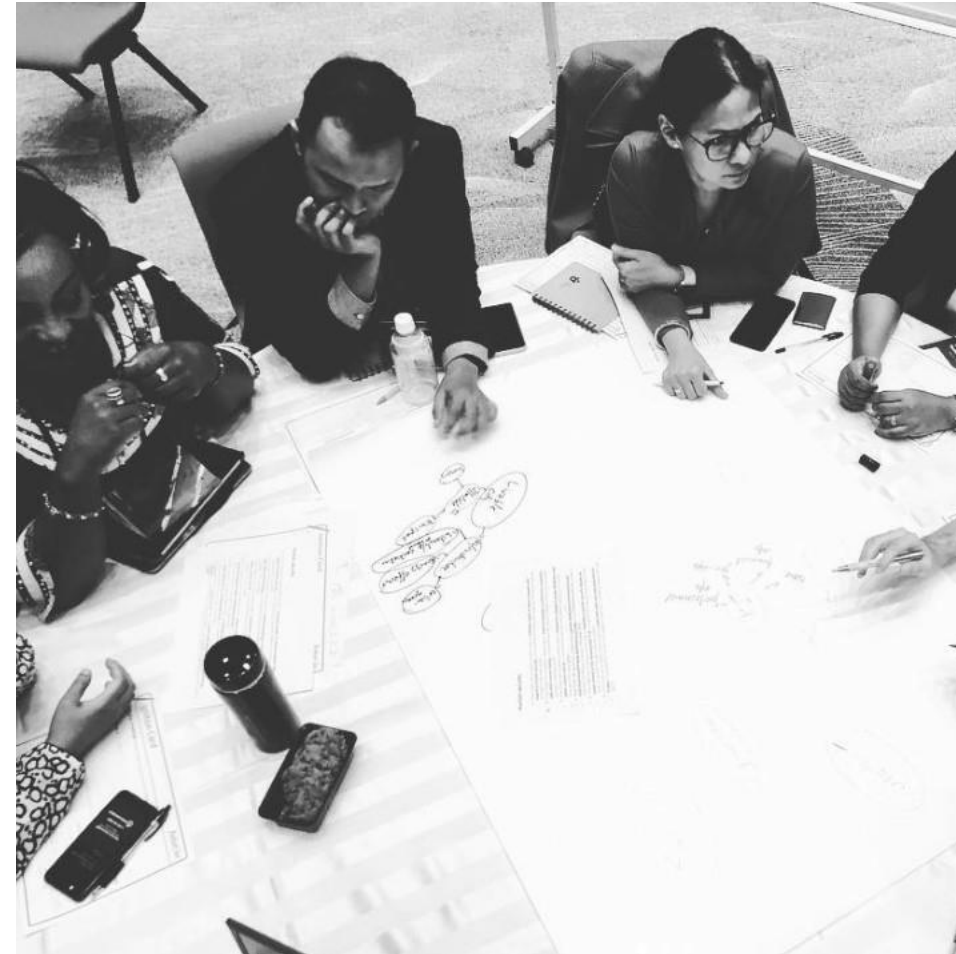
II. Retool Global Cooperation

To effectively respond to future climate risks



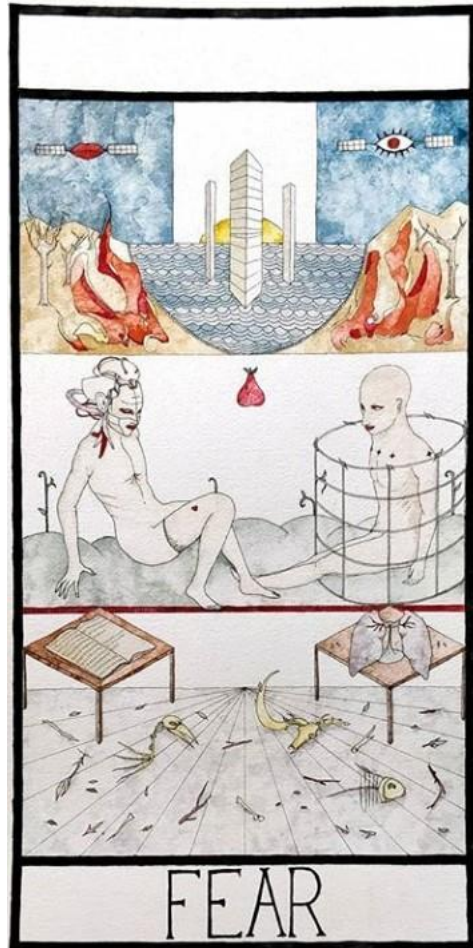
Policy pathways must

3. Ensure universal open-access to data and information
4. Facilitate restoration and equitable management
5. Enable governance and coordination of necessary human migration



III. Transforming sectoral approaches

To sustain long-term regenerative resilience



Policy pathways must

6. Counter health and wellbeing impacts through a holistic ecosystem approach
7. Mainstream regenerative food production capabilities
 - precision agriculture
 - Smallholder focus
 - nutritious food for all
8. Develop transformative financial instruments (& fiscal incentives)



This approach...is transformative as it views the health of nature, including all living beings, as both the condition and criterion for human resilience to climate change.





Our local challenge
is to implement transformative policy.
Everywhere. Firmly. Quickly.