



Food, Farming
& Countryside
Commission

Local action for national resilience

Delivering effective land use decisions



Land Use challenge

- *How to meet national goals?*
- *How to engage citizens?*
- *How to reflect local needs and priorities?*
- *How to deliver effectively for public value?*

Food, Farming
& Countryside
Commission

Our Future in the Land



A Land Use Framework

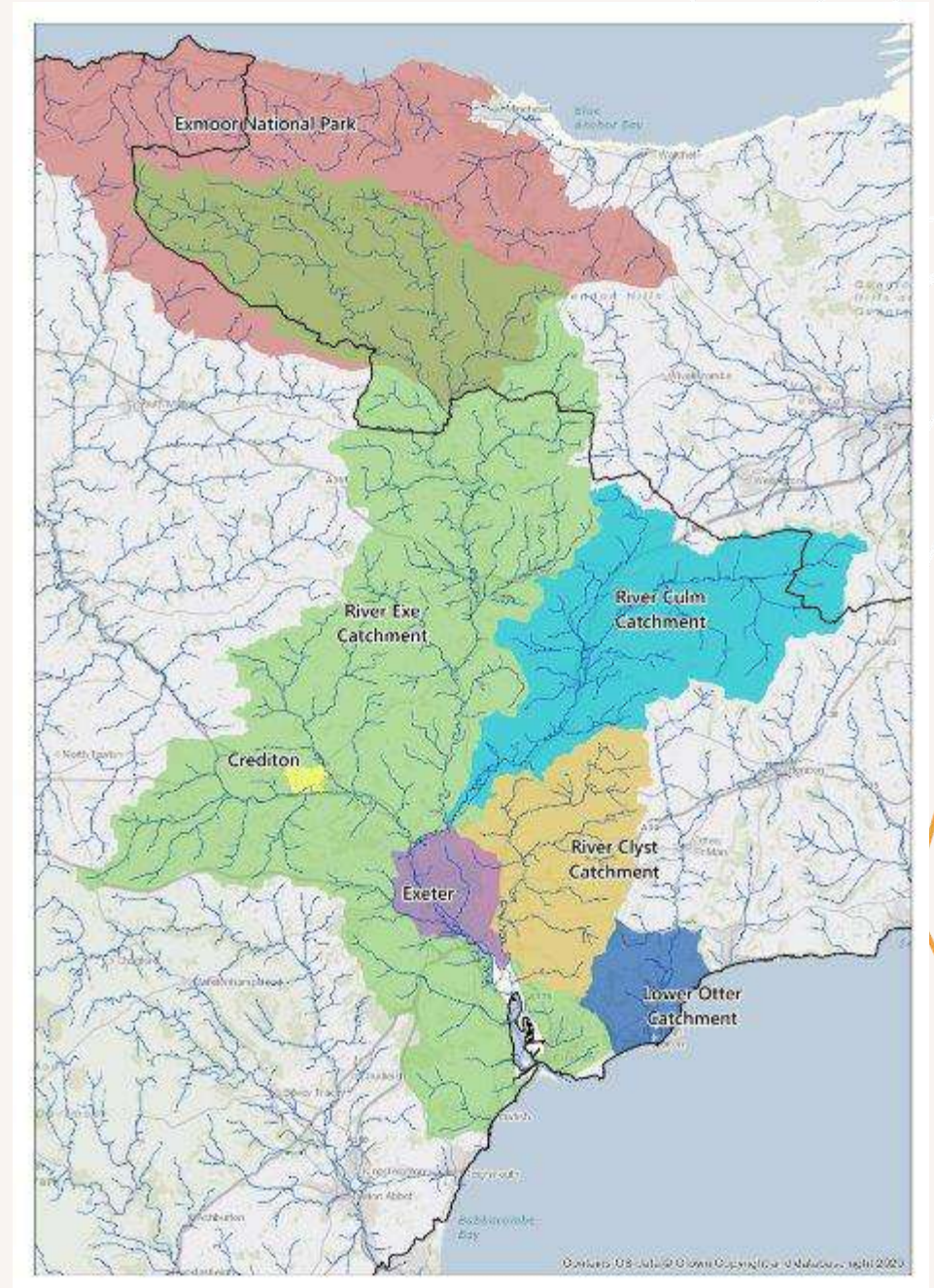
“An enabling mechanism that brings together data, maps, people and sets out principles to follow to help those making land use change decisions deliver multiple benefits and better public value”

1. Establish
2. Scope
3. Create
4. Test
5. Learn and adapt
6. Embed and share



Trialling at the local level

- Invited by partners; different approaches in each place
- Devon and Cambridgeshire & Peterborough
- 2 years



Leadership

- Strong commitment from leadership is essential
- Statutory weight, and resourcing, is important
- Expert facilitation is important for generating trust and breaking down silos

Data and evidence

- A shared evidence base is critical
- Interoperability of datasets is a key challenge
- There is plenty of data available: it needs to be accessible



Land Use Framework Cambridgeshire Pilot

Explore data layers from different categories
to understand the land use in Cambridgeshire.

Search data

☐ Show active layers only



Energy

Energy infrastructure



Mean electricity use



Wind speed



Aspect



Solar GHI



Transport

Bus networks



Rail networks



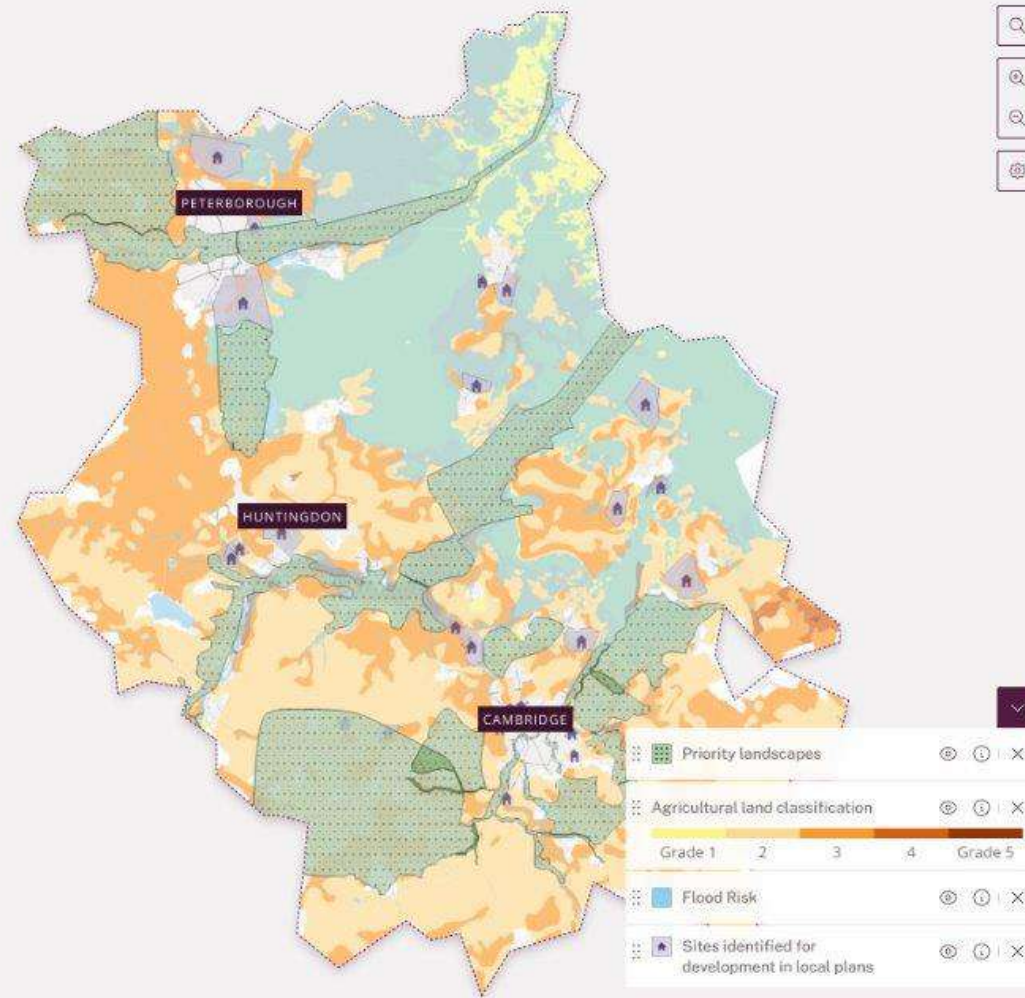
Cycle networks



Mean public transit journey to essential
services



% of journeys by car





Stakeholder engagement

- Pilot Listening Tours
- Upfront engagement: identify conflict and solutions early
- Supports greater understanding, collaboration, buy-in

The Food Conversation

- 18 months
- 12 locations (+ self-hosted)
- 345 citizens across the assemblies

The Food Conversation

6,600+
HOURS SPENT
BY CITIZENS IN
DELIBERATION

118,000+
INVITATIONS SENT

345
CITIZENS INVOLVED
IN THE ASSEMBLIES

70+
COMMUNITIES HOSTING
THEIR OWN LOCAL FOOD
CONVERSATIONS SO FAR

70+
EXPERT SPEAKERS
FROM ACADEMICS,
LOCAL LEADERS,
POLICYMAKERS, FOOD
BUSINESSES AND MORE

MAP KEY

-  The Food Conversation deliberation
-  Community hosted Local Food Conversation





Fairness and agency

- Prefer 'local' food: transparency and choice
- Local food is about what consumers want as well as what is being produced
- An enabling environment: healthy food options, fairness in the system, agency

Local to national

Agency

Diversity

Resilience





Food, Farming
& Countryside
Commission

Thank you

Georgie Barber

LAND USE LEAD

+44 (0) 20 7118 1870

Georgie.barber@ffcc.co.uk



Food, Farming &
Countryside Commission
1-3 Gloucester Road
Bristol BS7 8AA

t: +44 (0) 20 7118 1870

w: ffcc.co.uk

🐦 @FFC_Commission

Registered in
England and Wales

Company no. 12562770

Charity no. 1195790

© FFCC 2023