

Purbeck Heaths National Nature Reserve & Single Grazing Unit



giving
nature
a home

Peter Robertson
Senior Sites Manager,
RSPB Dorset Reserves

A landscape, not just a habitat



Wet heath

Mire

Dry heath

Acid grasslands



Saltmarsh and mudflats



Woodlands and scrub



Sand dunes





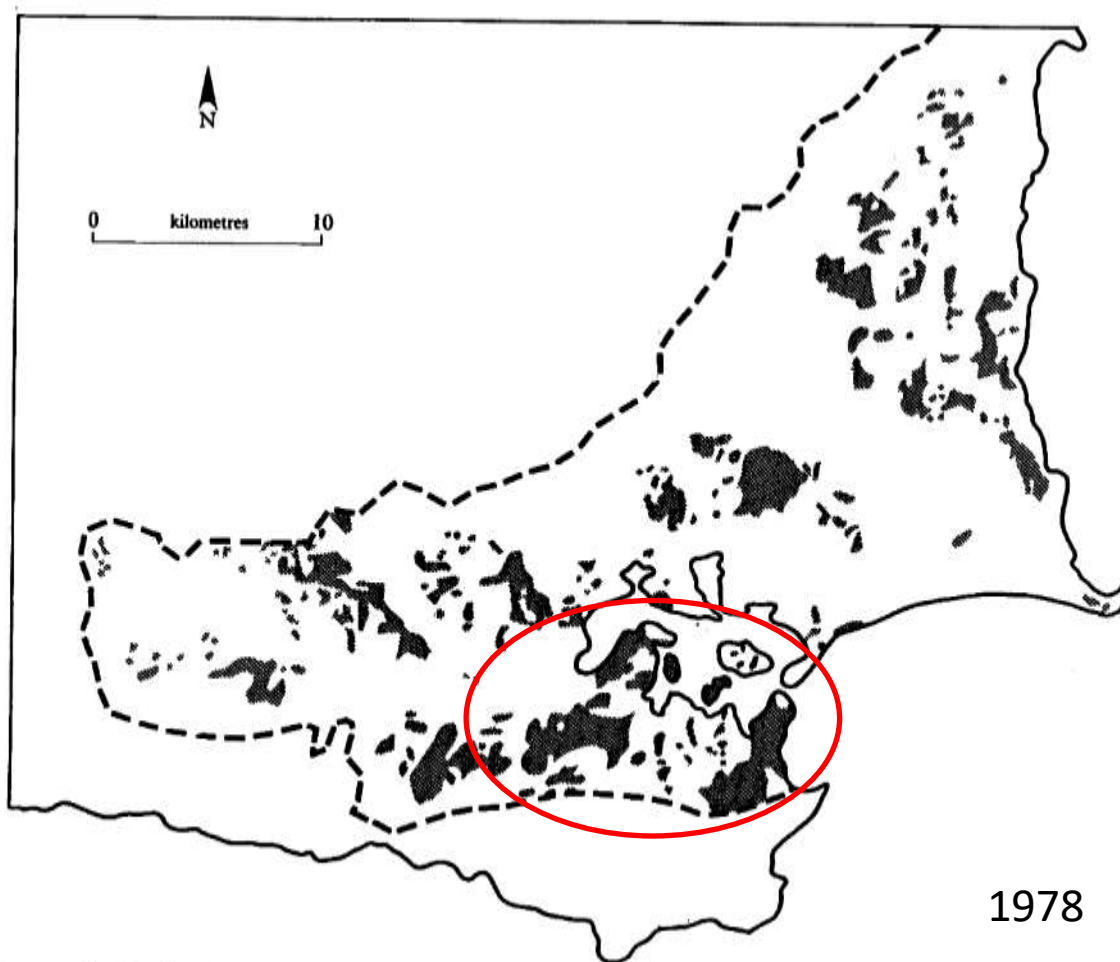


Figure 22 The extent of heathland in the Poole Basin in 1978 (from Webb and Haskins 1980)

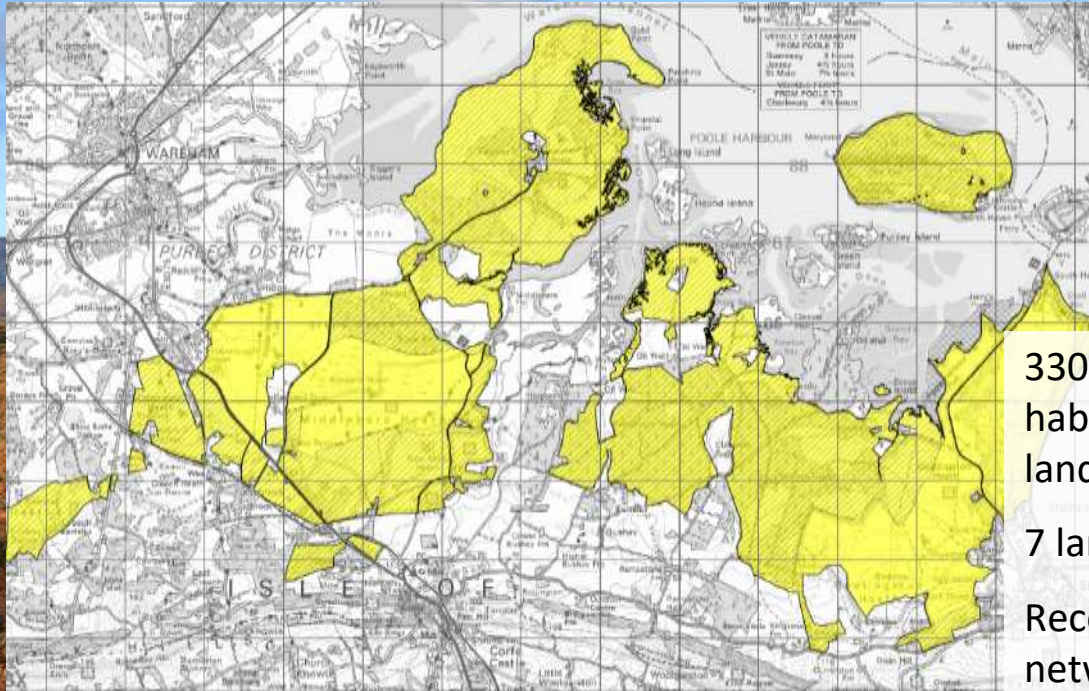


Wild
Purbeck
NATURE IMPROVEMENT AREA



The 'Wild Purbeck' heathland vision

Restoring SCALE & CONNECTIVITY of Purbeck's heathlands



3300 ha heathlands and associated habitats, all functioning as one landscape

7 landowners working together

Reconnecting a wider heathland network of 5-6000 ha is realistic

Why a single NNR?



The NNR is about understanding it as a single landscape



1 NNR, 7 land managers

The NNR sets out a 'vision' and a framework for management for 3300 ha of this landscape. Each partner still has their own management plans and makes their own decisions

But some areas are best managed collectively:

- Fire prevention, deer management
- Sharing resources and volunteers
- Visitor management
- Local community engagement
- Funding applications
- Monitoring and research



Rempstone Estate Trust

amphibian and reptile
conservation



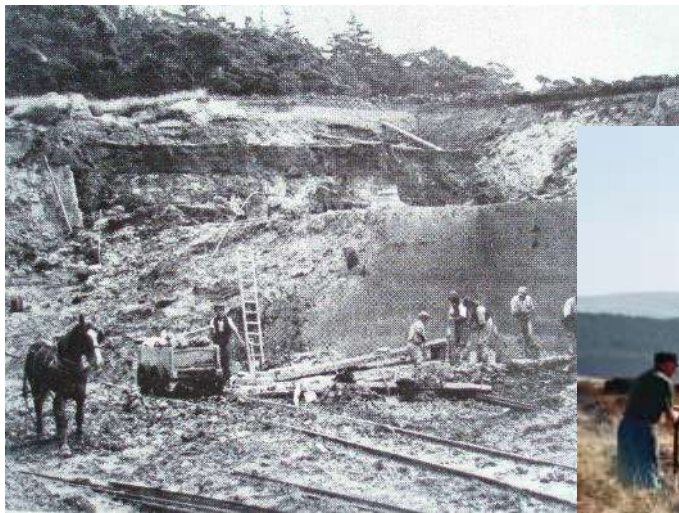
National
Trust



Forestry England

Is scale enough?





The 'Wild Purbeck' heathland vision

Reinstate the PROCESSES that will maintain a dynamic, diverse and resilient landscape.

Large herbivores and ecosystem engineers are at the heart of this.

In a 'wild' environment, large herbivores shaped the landscape. Our modern-day herbivores can mimic the actions of extinct megafauna, like aurochs and tarpan.



And it doesn't mean 'keep out'



This doesn't mean 'letting go'

