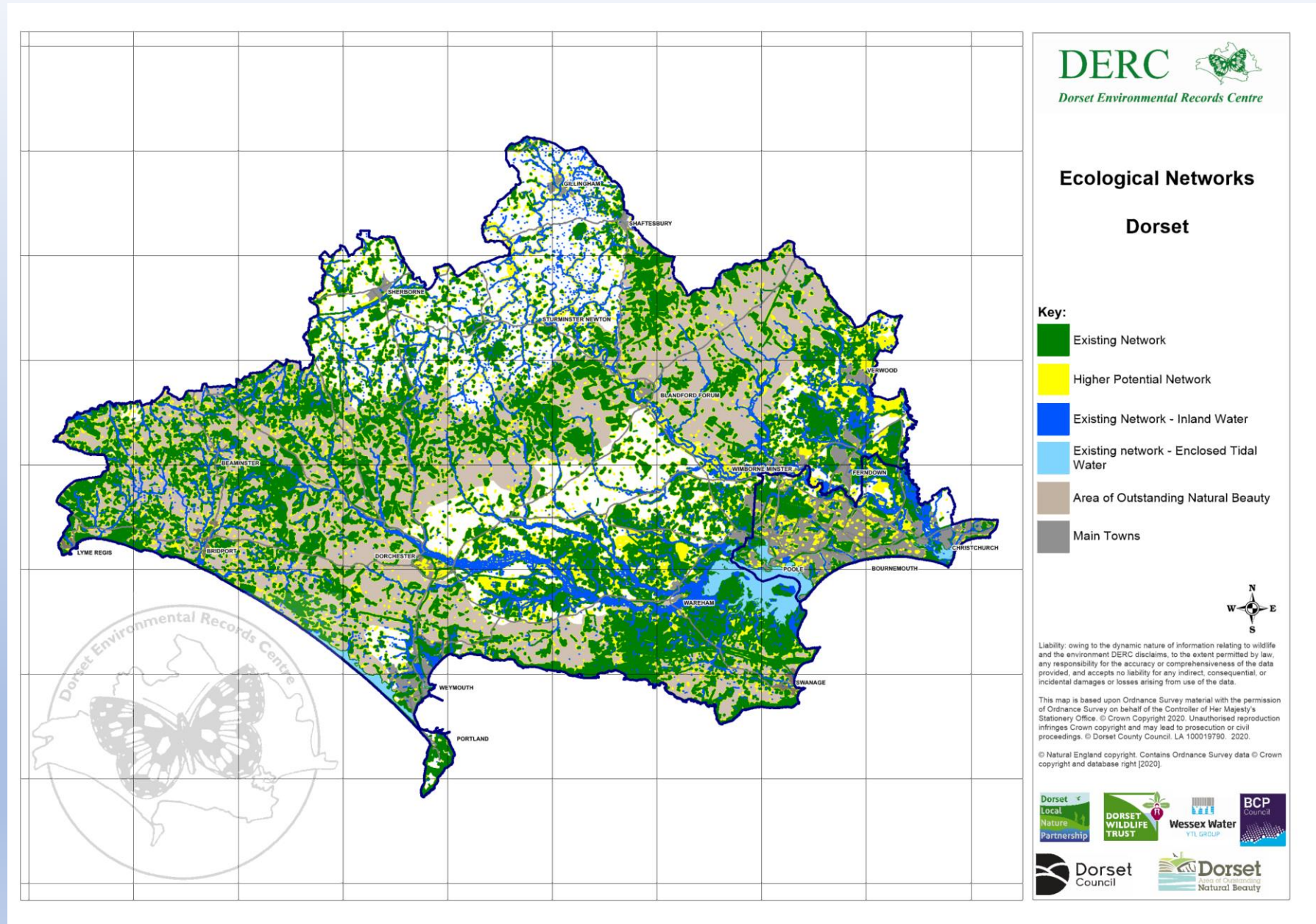


Weymouth and Portland NRN and Ecological Networks

Background

- In 2020 DERC updated the Ecological Network map for Dorset
 - New data sets from Dorset AONB
 - Changes to conservation sites (SSSI, SNCI)
 - Add LCNR
 - Urban networks in Dorchester
 - Updated W&P corridors and stepping stones

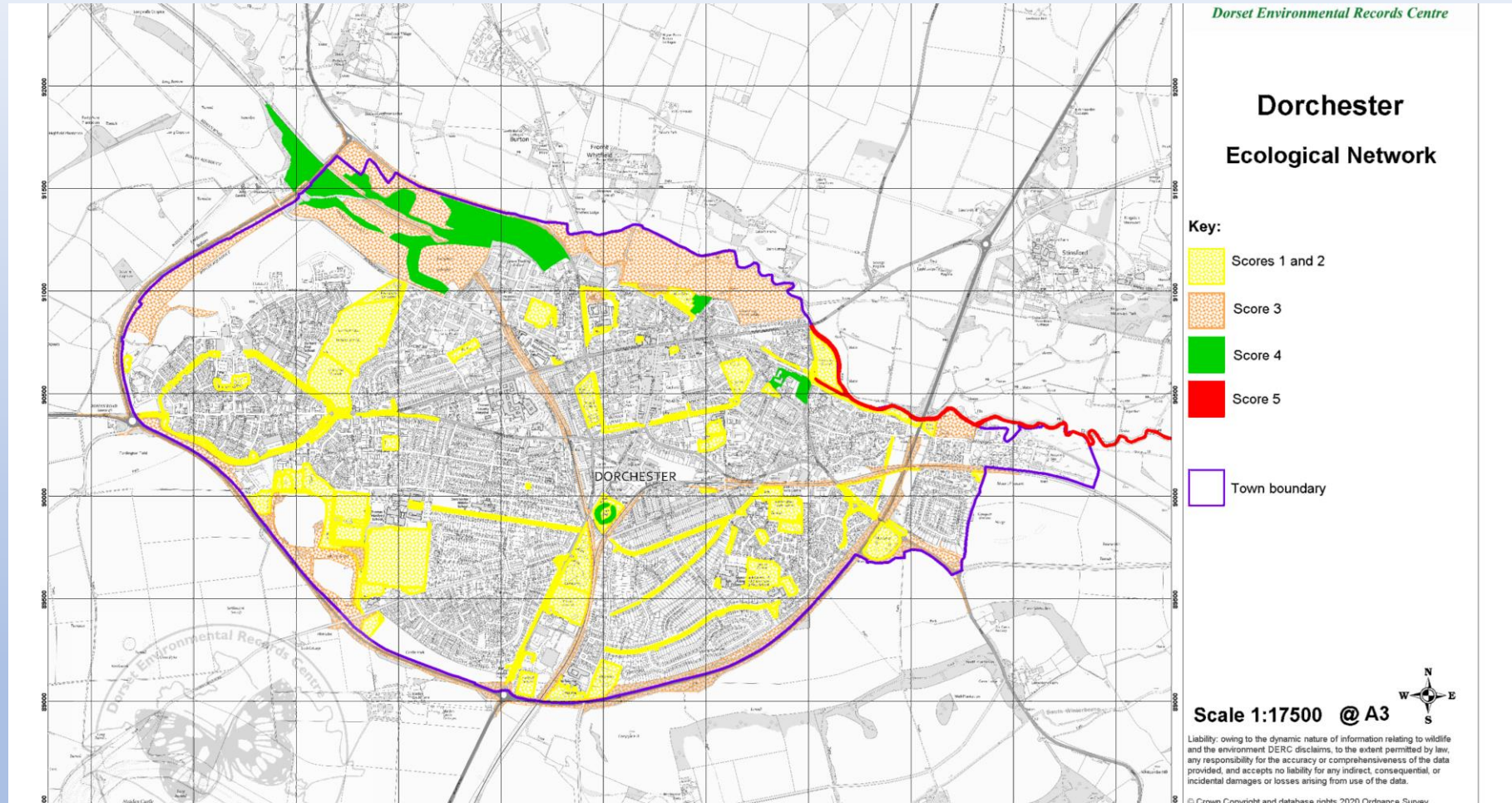
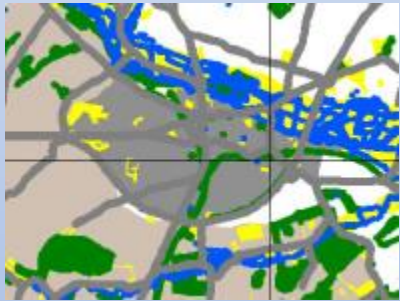


Appendix 1: Sites included in the Dorset Ecological Network

Existing Ecological Network				Higher Potential Ecological Network	Additional Datasets
International Sites	National Sites	Local Sites	Wildlife Corridors & Stepping Stones		
Designated as of international importance.	Designated as of national importance.	Recognised in Dorset as of county nature conservation value.	Forming links between sites or through urban areas; small sites of wildlife value; areas of habitat restoration or creation.	Improvements to these areas would benefit or extend the existing network including areas with high potential for restoration.	May be shown on maps to complement existing network.
² Ramsar Sites ^{1,2}	Marine Conservation Zone (MCZ)	Churchyards in the Living Churchyard project	Ancient Semi-natural Woodland	Bournemouth Wildlife Sites survey (scoring 1-2)	Areas of Outstanding Natural Beauty (AONB)
Special Area of Conservation (SAC) ¹	National Nature Reserve (NNR)	Local Community Nature Reserves (LCNR) (including existing SANGs and HIPs)	Bournemouth Wildlife Sites survey (scoring 3-5)	Dorchester ecological network sites (scoring 1-2)	Wild Purbeck Nature Improvement Area (NIA)
Special Protection Area (SPA) ^{1,2}	Site of Special Scientific Interest (SSSI) ^{3,4}	Local Geological Site (LGS)	Dorchester ecological network sites (scoring 3)	Dorset Landscape Monitoring (2019) core area buffers (c40m) and stepping-stones	Water layer (rivers, ditches, ponds)
		Local Nature Reserve (LNR)	Dorset Landscape Monitoring (2019) core areas	Indicative fluvial floodplain	Enclosed tidal water
		Nature Parks designated in Local Plans	Habitat Restoration Sites (ponds with a 5m buffer)	Minerals sites before restoration begins	
		Nature Reserves (including DWT, RSPB, BC, ARC)	Nature Parks established by local partnerships	Other open green spaces (e.g. playing fields)	
		Site of Nature Conservation Interest (SNCI)	Trailways, railways and roads with good semi-natural habitat adjacent	Plantations on Ancient Woodland sites	
		The Great Heath (TGH) Project sites	W&PBC – Wildlife Corridor & Stepping Stones survey	Portland Quarry Nature Park (aspirational areas)	
		Veteran tree sites		Proposed SANGs and HIPs	
				RSPB heathland potential areas (East Dorset)	
				Trailways and roads with poor/no adjacent habitat	

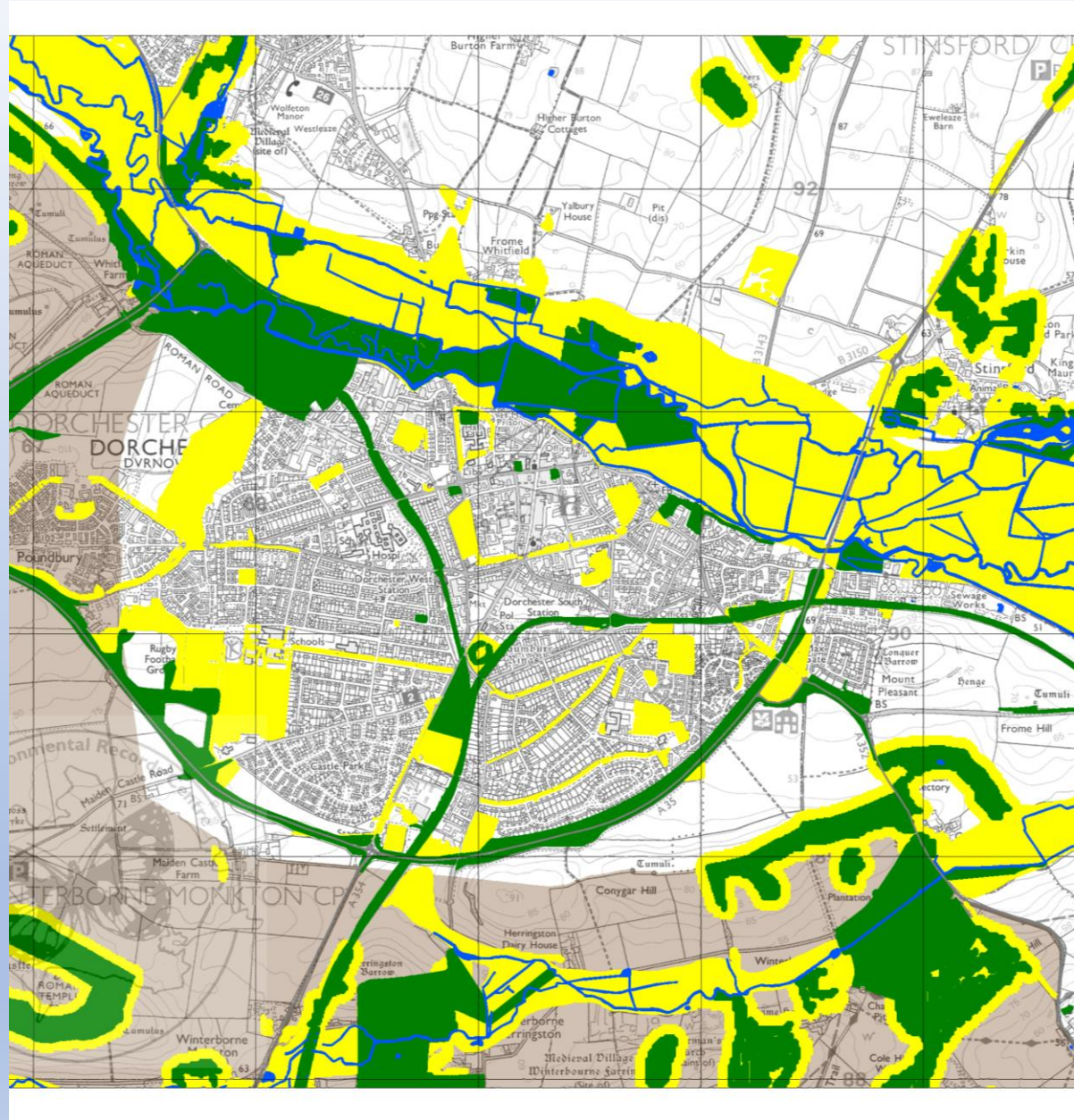
Dorchester Ecological Network

- Follows on from work in Bournemouth
- Looked at open areas
- Graded them 1-5



Dorchester Ecological Network

- Incorporated into the ecological network map



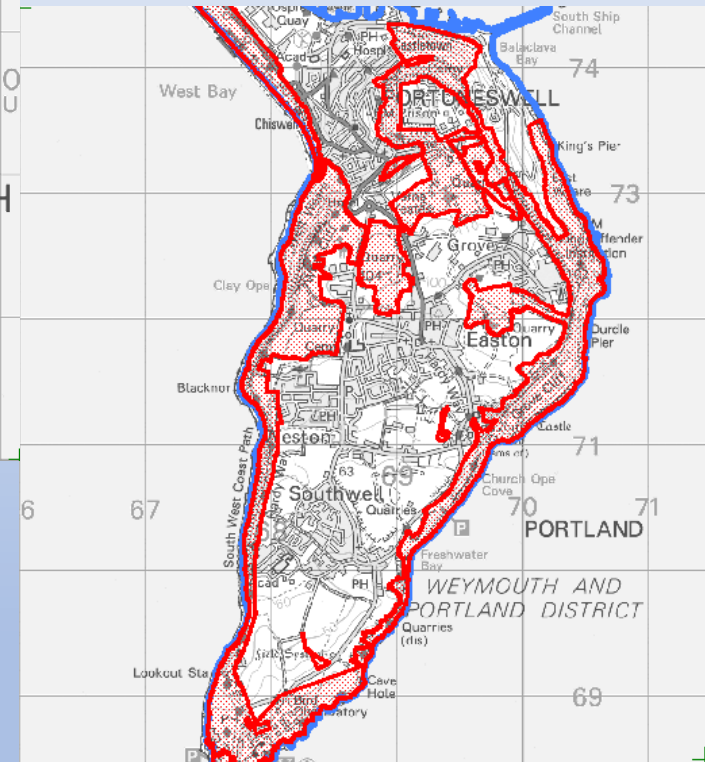
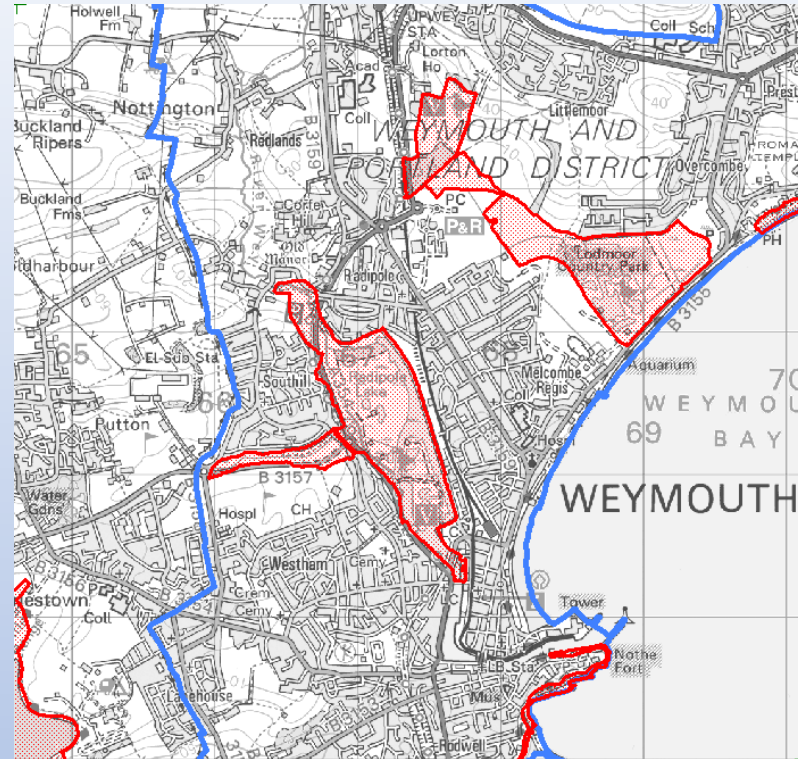
NRN seed funding gave opportunity to try the same thing for the W&P area

- Different to Dorchester
- Not a single discreet town but
- Weymouth – congregation of districts with ports and sea front plus RSPB reserves
- Portland – small towns on the island circumvented by SSSI



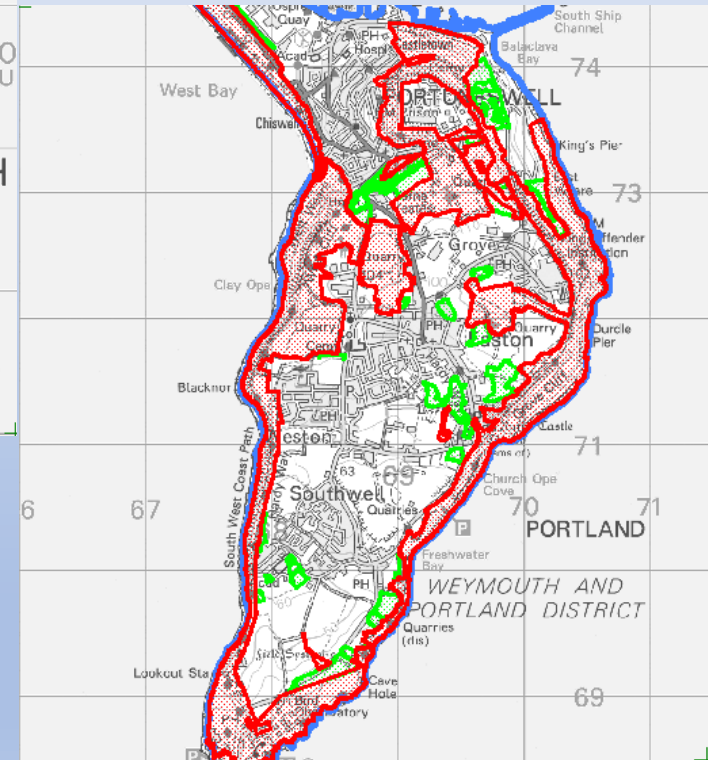
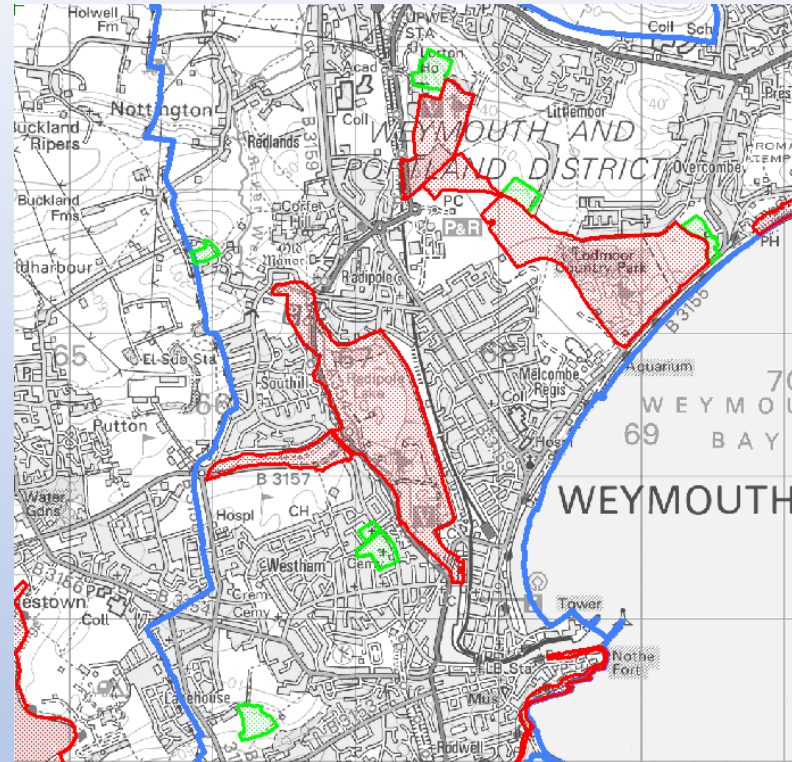
Selection of sites

- Conservation sites
 - SSSI



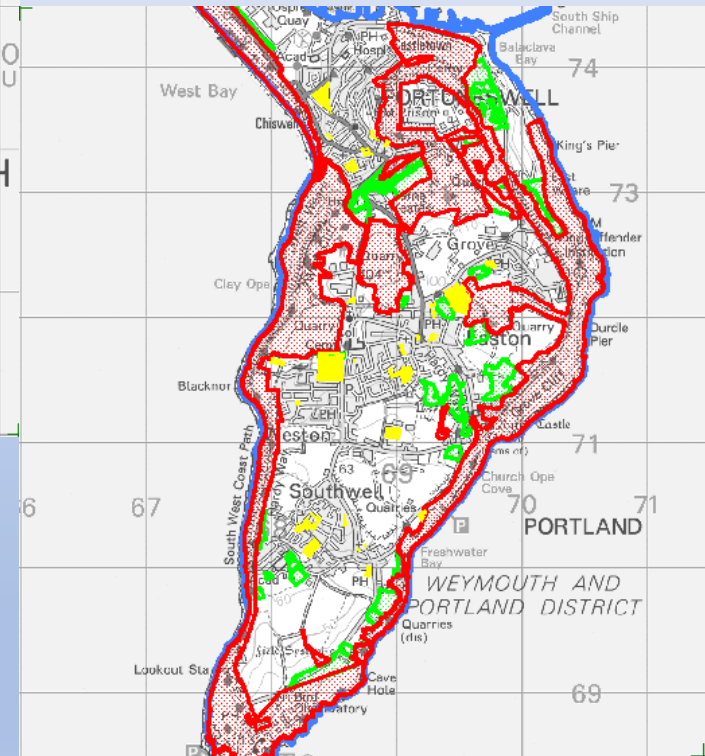
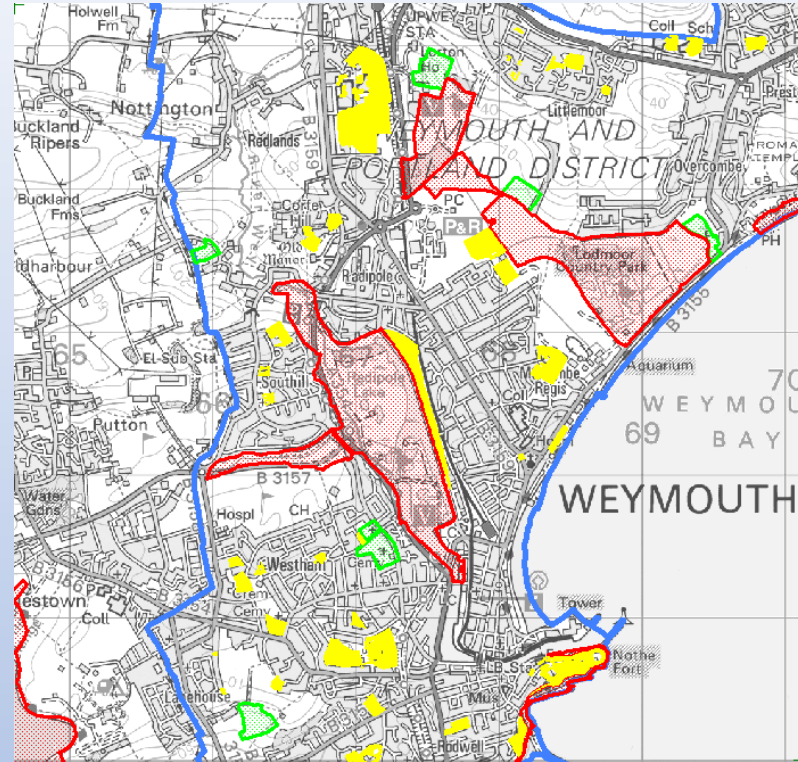
Selection of sites

- Conservation sites
 - SSSI
 - SNCI and LNR



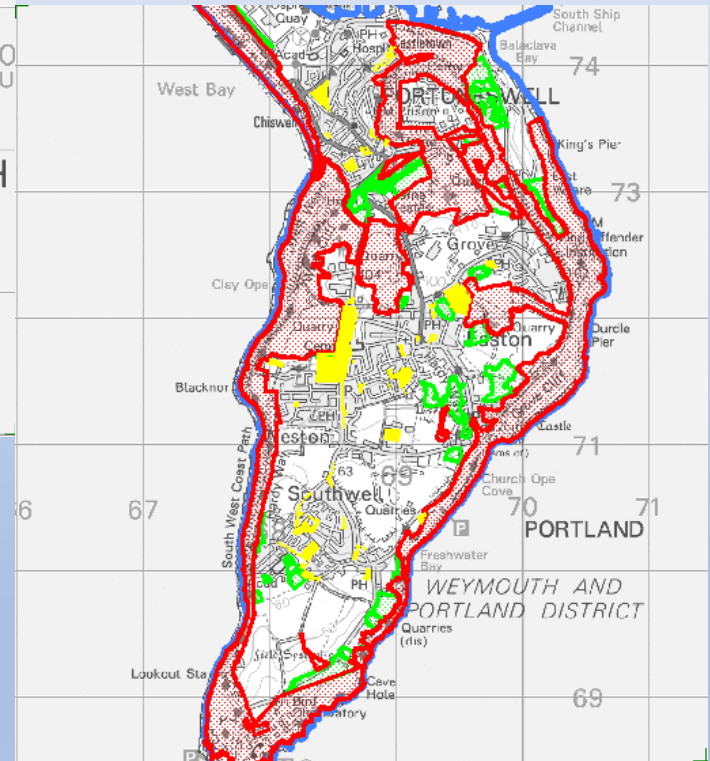
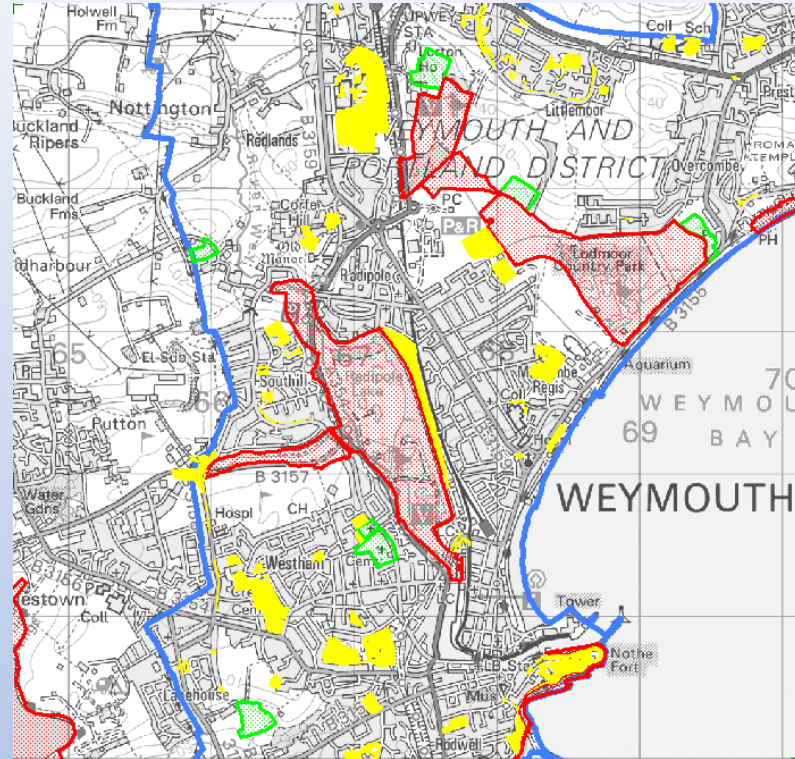
Selection of sites

- Conservation sites
 - SSSI
 - SNCI and LNR
- Local authority areas
 - Parks and gardens
 - Recreation grounds
 - Allotments
 - Schools and college grounds



Selection of sites

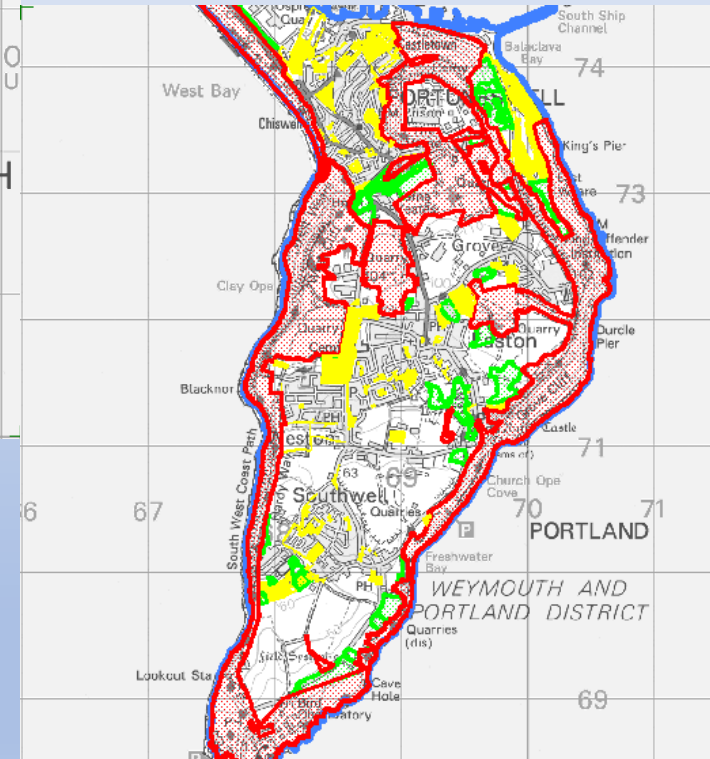
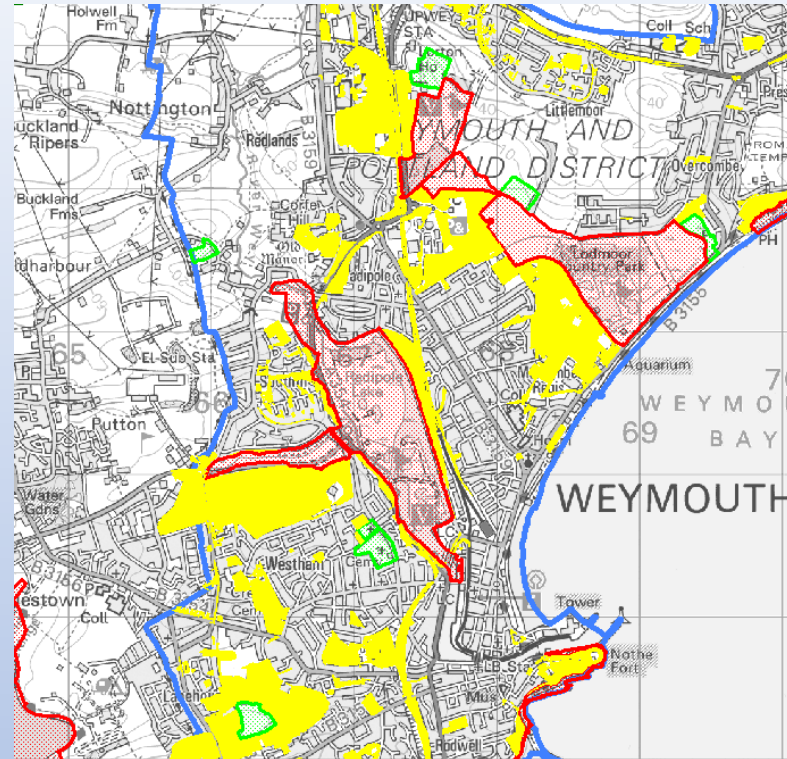
- Conservation sites
 - SSSI
 - SNCI and LNR
- Local authority areas
 - Parks and gardens
 - Recreation grounds
 - Allotments
 - Schools and college grounds
- Churchyards and cemeteries
- Verges



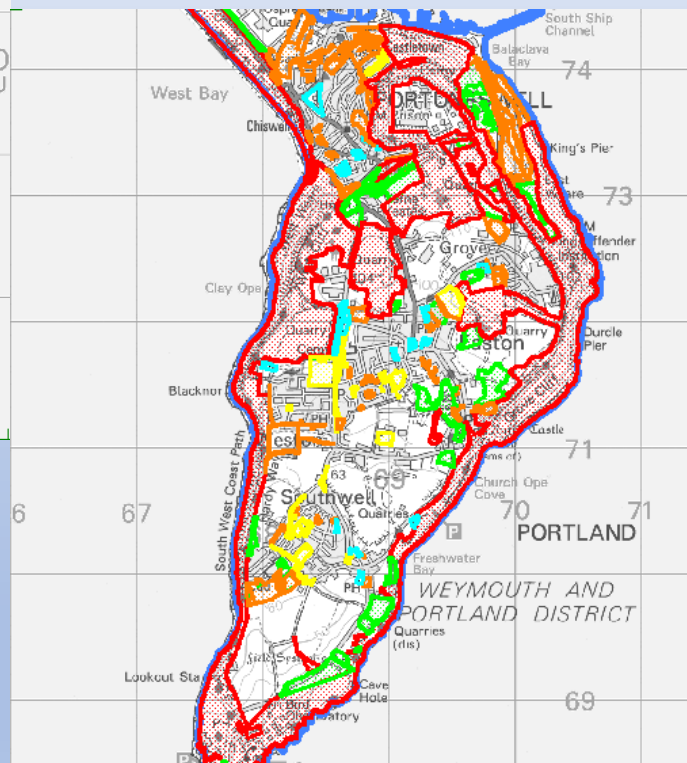
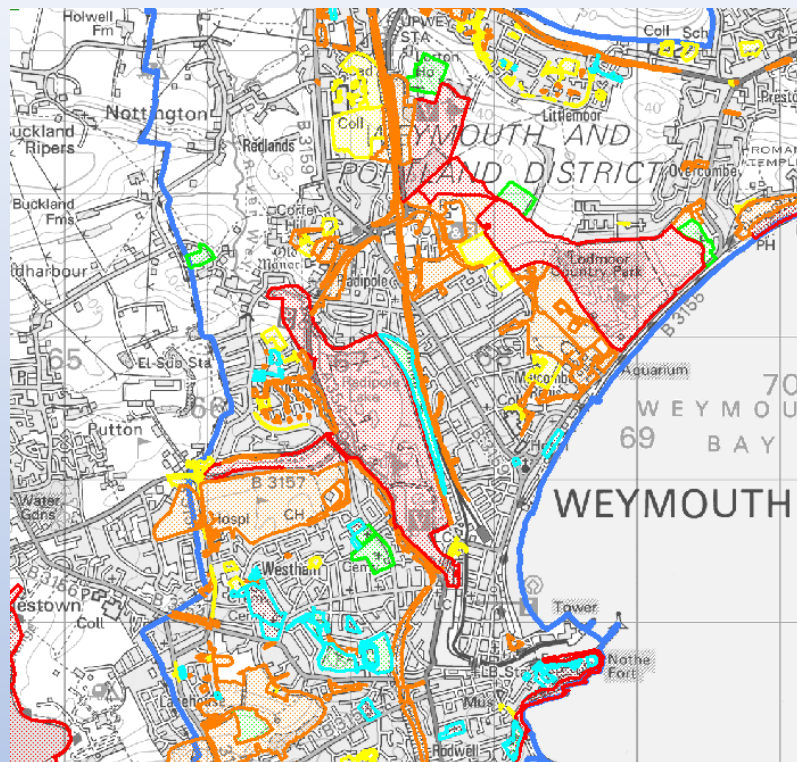
Selection of sites

- Conservation sites
 - SSSI
 - SNCI and LNR
- Local authority areas
 - Parks and gardens
 - Recreation grounds
 - Allotments
 - Schools and college grounds
- Churchyards and cemeteries
- Verges

Focus on publicly accessible areas, community areas and areas with semi-natural habitat. Private gardens were not included.



Score	Category	Description
5	National Sites: SSSI	Areas of outstanding habitat, designated nationally
4	Local Sites: SNCI, LNR	Areas of good natural/semi- natural habitat
3	Sub-SNCI	Semi-natural habitat, predominately native species usually including a few DN May include: wildlife areas; churchyards with good floral diversity; permanent pasture, water meadows, wildlife corridors and areas within the floodplain
2	Gardens and allotments	Managed as gardens, predominately non-native species, good nectar plants May include: churchyards with limited floral diversity, good road verges, avenues with mature trees and ground flora, orchards and unconnected areas within the floodplain with poor flora or other interests
1	Amenity grassland	Poor native flora, often Lolium dominated grassland May include: sports fields, play parks, wide road verges with poor floral diversity

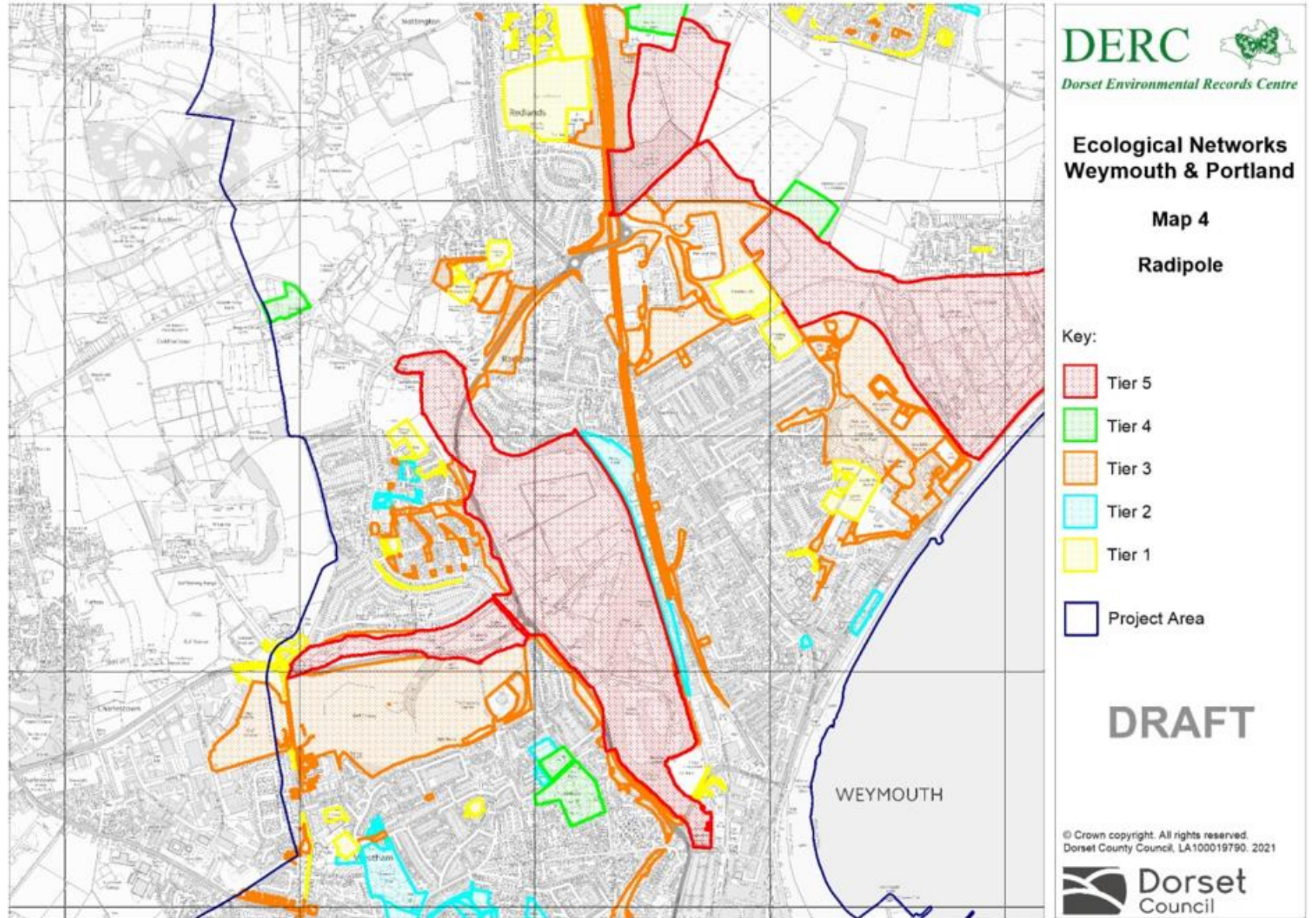


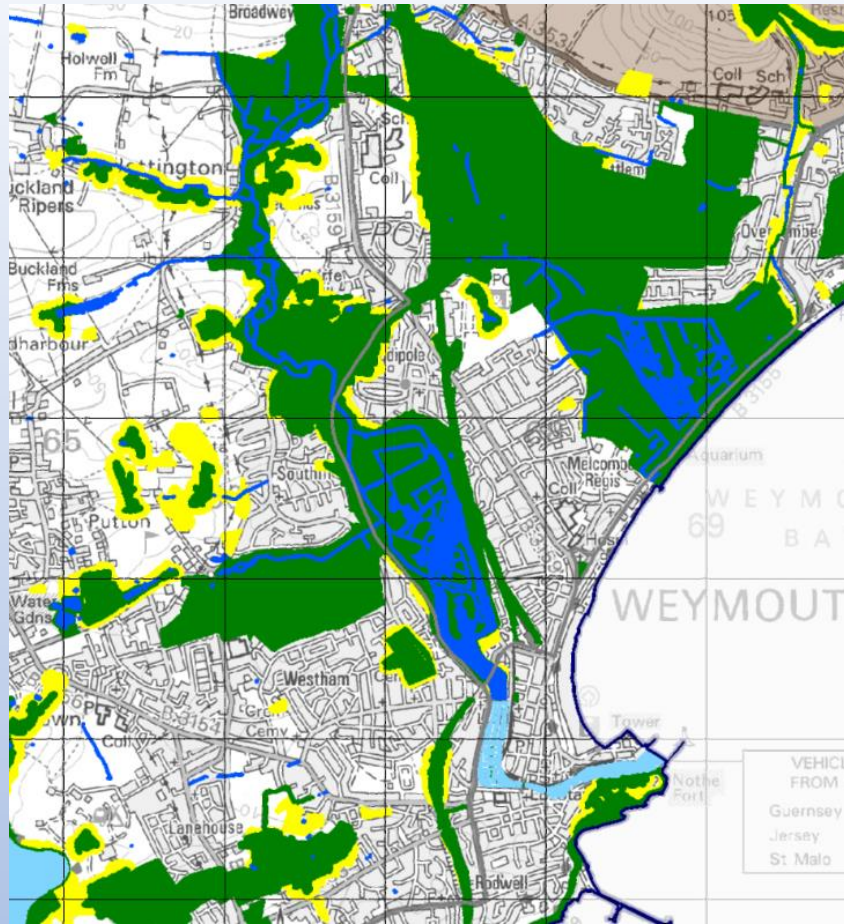
What happens next?

So far a desk-top exercise
(supported by access to
DERC databases and
aerial photo)

Set of maps available for
review by local
stakeholders

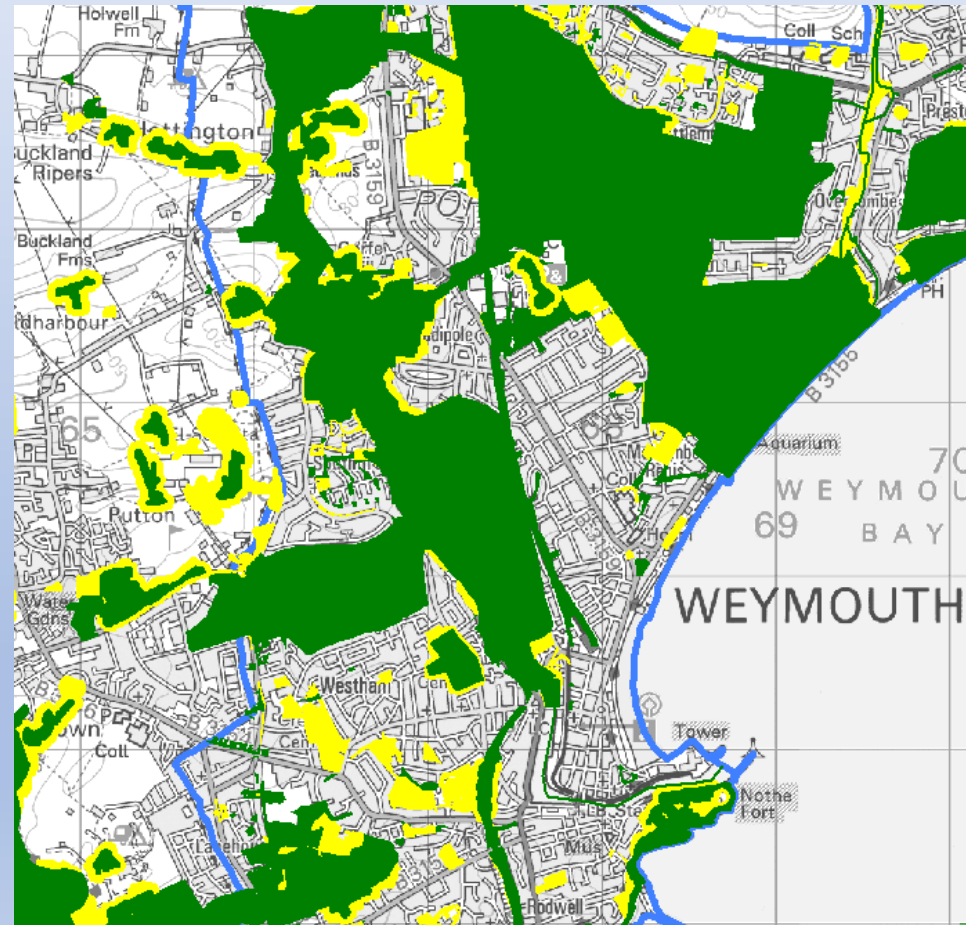
But what have we
missed?

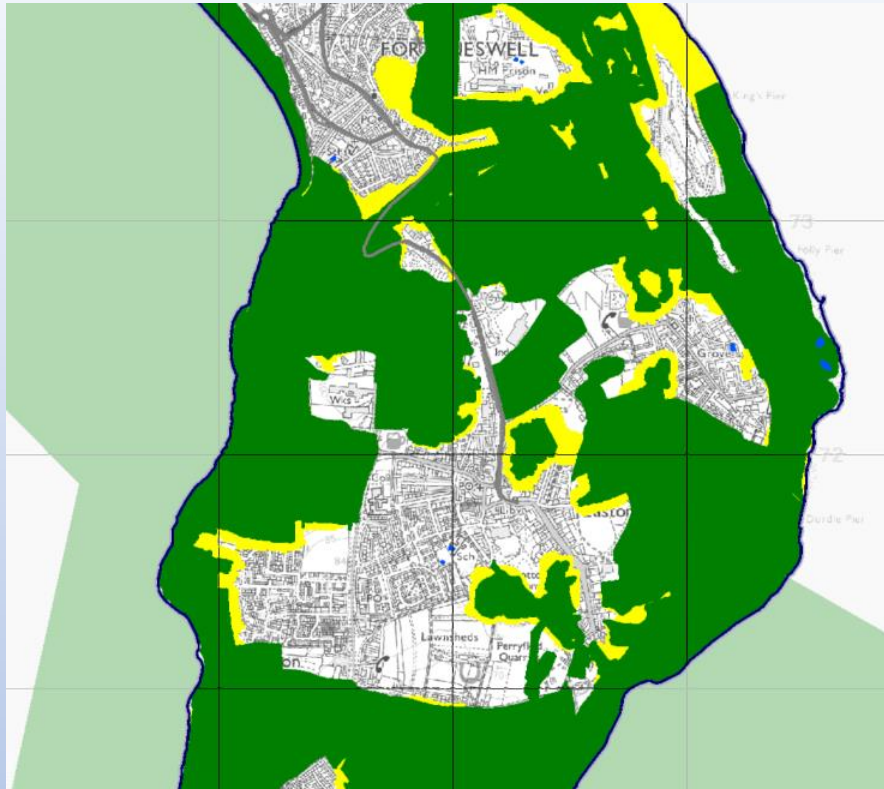




And finally...

.. integration with the current ecological network map

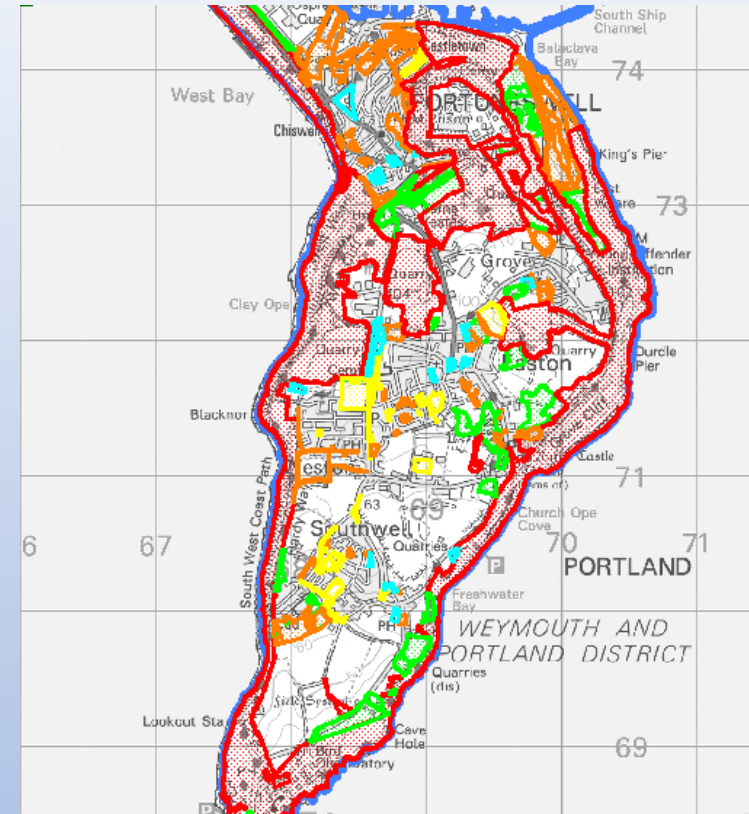




Comments and feedback to:

Carolyn Steele

carolyn.steele@dorsetcouncil.gov.uk or
derc@dorsetcouncil.gov.uk



DERC



Dorset Environmental Records Centre