

# SAC habitats on the Isle of Portland

Bryan Edwards  
Dorset Environmental Records Centre



## Isle of Portland to Studland Cliffs primary features

**H1230** Vegetated sea cliffs of the Atlantic and Baltic coasts

**NVC communities:** MC1, 4, 5, 8, 11



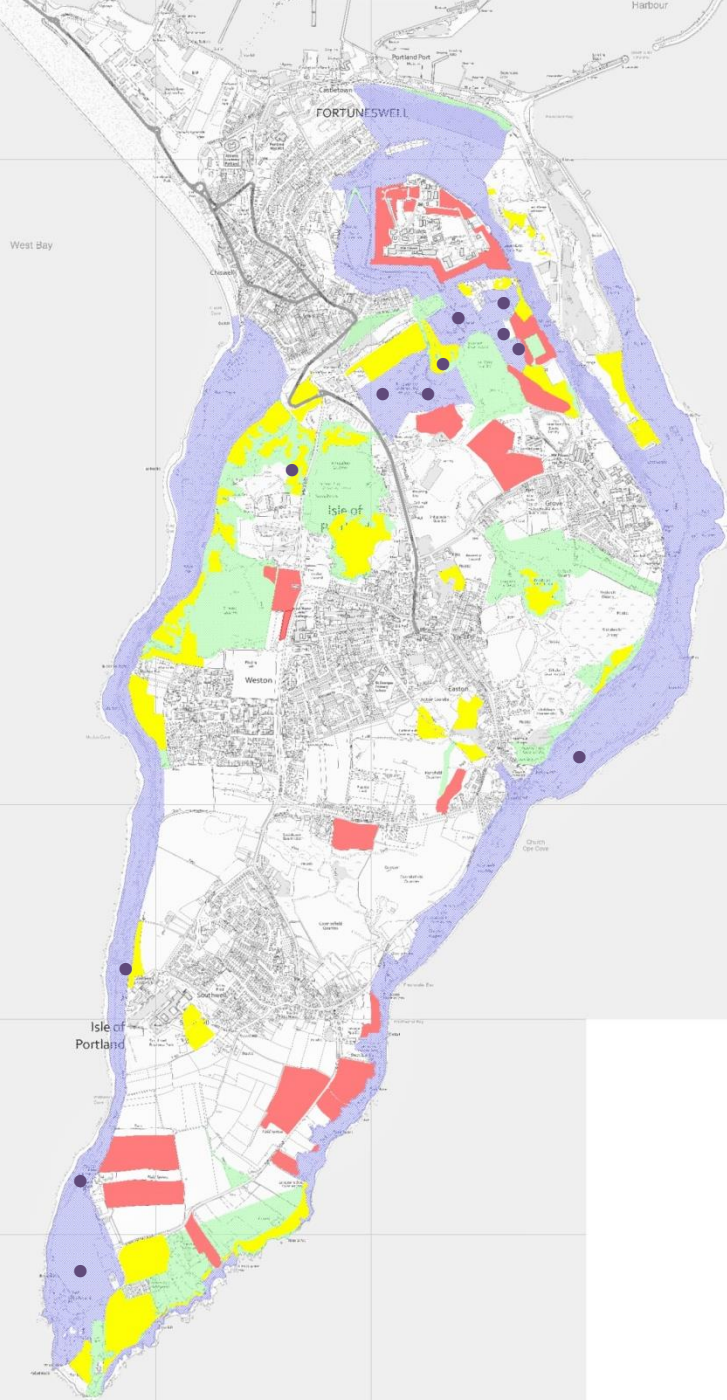
**H6210** Semi-natural dry grasslands and scrubland facies on calcareous substrates

**NVC communities:** CG1, 2, 3, 4, 5, 7  
open species-rich scrub - W21b



**Populations of Annex II species:**  
Early Gentian *Gentianella amarella* subsp. *anglica*





Blue = SAC

Green = SSSI

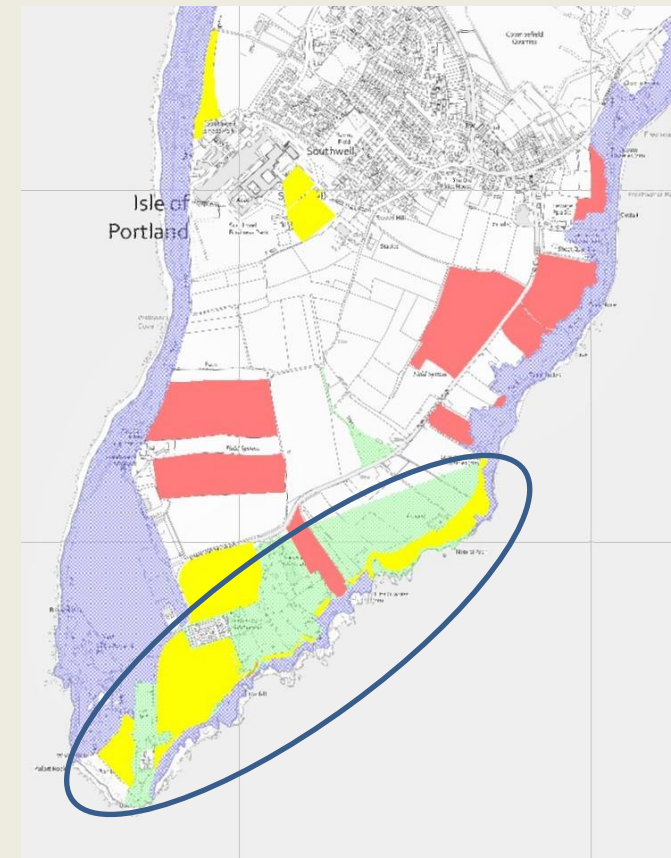
Yellow = SAC habitat (outside of SAC)

Red = potential SAC habitat

● = Populations of Early Gentian



**MC11** Red Fescue – Sea Carrot grassland, Coastal strip



*Andrena nitidiuscula* Carrot Mining Bee

**H1230** Vegetated sea cliffs of the Atlantic and Baltic coasts



**H6210** Semi-natural dry grasslands and  
**scrubland facies** on calcareous substrates



*Dicranocephalus agilis*



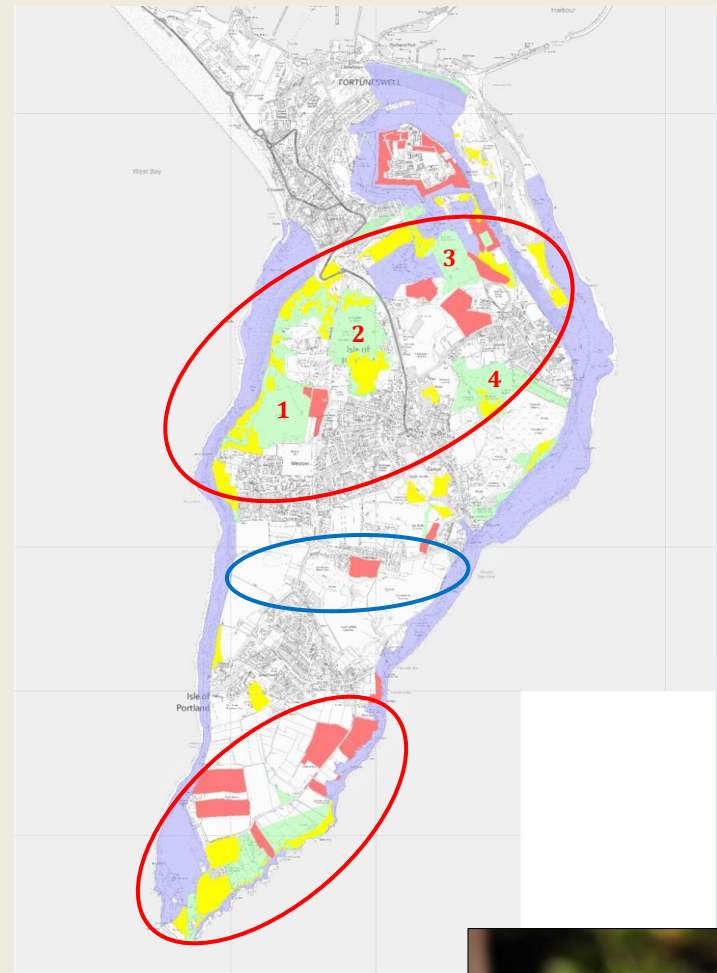
*Chrysotoxum elegans*



**CG1** short, open grassland



**CG3** taller, closed grassland



**Chalk Hill Blue**  
*Polyommatus coridon*





***Southbya nigrella*, S41, EN**  
Portland support >95% of the UK population

**Silver-studded Blue, S41, VU**  
*Plebejus argus*, 'Portland form'



**Brown-banded Carder Bee, S41**  
*Bombus humilis*

