



WEYMOUTH
TOWN COUNCIL

Emily Brown

Parks and Open Spaces Supervisor and
Development Officer

Parks and Open Spaces Team

- Operational team of sixteen: 6 gardeners, 2 arborists, 6 grass cutters/grave diggers, cleansing, nurseryman.
- Manage just under 100 ha:
 - Parks and Gardens
 - Open spaces
 - Allotments
 - Cemeteries
 - Play areas

Tumbledown Farm (11 ha) = management plan.

Varied biodiversity value



Parks and Open Spaces Biodiversity Policy 2021–2025

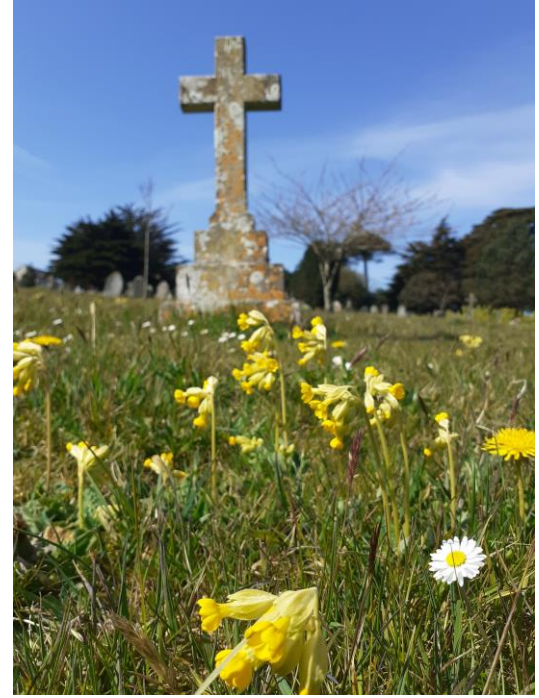
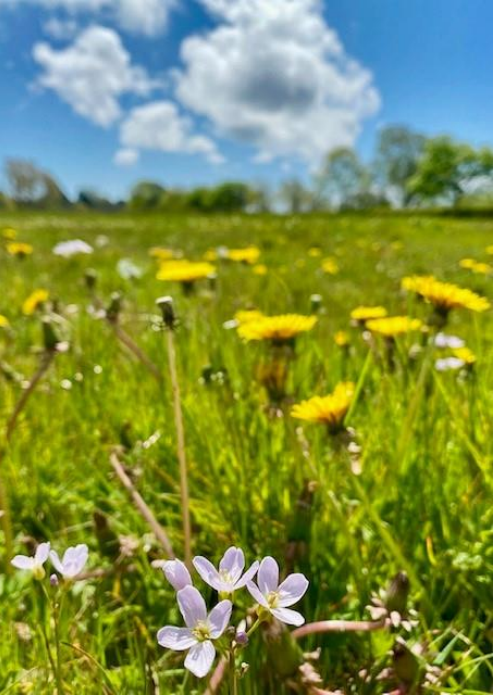


Draft biodiversity policy – going to committee tonight.

Overarching principles:

- 1) Maintain and enhance existing wildlife rich habitats
- 2) Create new habitats
- 3) Reduce pesticide and herbicide use
- 4) Schedule vegetation clearance to avoid nesting birds
- 5) Remove invasive non-native plants
- 6) Engage the public
- 7) Connect habitats

Maintain and enhance existing habitats



Create new habitat



Engage the public



Lessons so far...

- Start small – pick off easy targets
- Make sure your wild areas look managed, not neglected.
- Keep up a social media barrage and use signage
- Try to keep your team on board (!)
- Make sure you have a capacity in place and consider long term maintenance e.g. hedge cutting, watering saplings, disposal of grass arisings.

